

VOR/DME SCC	APP CRS	Rwy Idg
<b>113.9</b>	<b>238°</b>	<b>6500</b>
Chan <b>86</b>		TDZE <b>66</b>
		Apt Elev <b>67</b>

VOR Z RWY 24  
DEADHORSE (SCC) (PASC)

**T**

**-45°C**

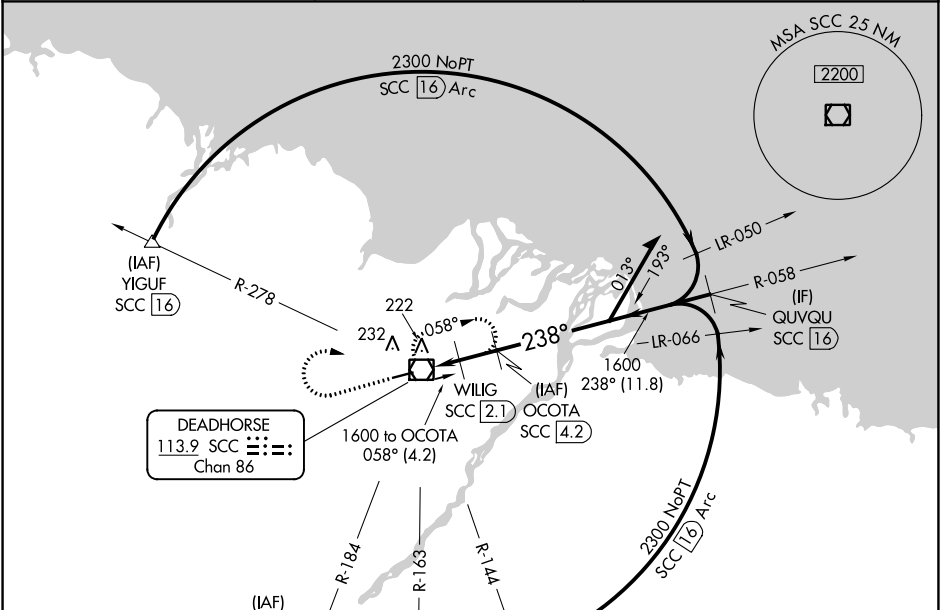
DME required.  
For inop ALS, increase Cats C/D/E visibility to RVR 6000.

**MALSR**

**A5**

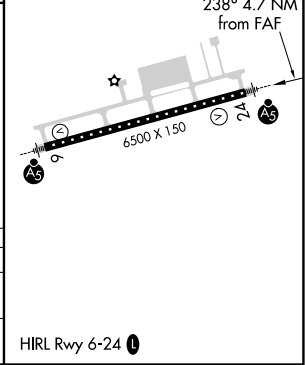
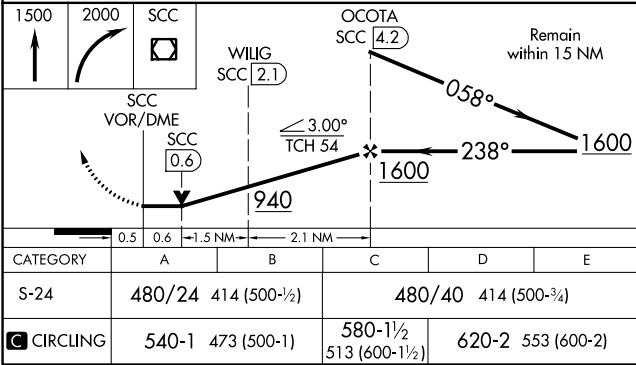
**MISSED APPROACH:** Climb to 1500 then climbing right turn to 2000 direct SCC VOR/DME and hold, continue climb-in-hold to 2000.

AFIS <b>118.4</b>	ANCHORAGE CENTER <b>134.4 370.9</b>	DEADHORSE RADIO <b>123.6 (CTAF) 0</b>
----------------------	--	--



**DME REQUIRED**

ELEV **67** **D** TDZE **66**



AK, 05 NOV 2020 to 31 DEC 2020

AK, 05 NOV 2020 to 31 DEC 2020