

LOC/DME I-ECH 109.3 Chan 30	APP CRS 115°	Rwy Idg TDZE 92 Apt Elev 92	7500
ILS Y or LOC Y RWY 11 KETCHIKAN INTL (KTN)(PAKT)			

⚠ DME and ADF required. For inop MALS, increase S-ILS 11↑ visibility to RVR 6000 and S-LOC 11 Cats C and D visibility to 2½.

RVR 1800 authorized with the use of FD or AP or HUD to DA.

MALS

AS

MISSED APPROACH: Climb to 5000 direct CMJ NDB and on CMJ NDB bearing 124° to UCARU/I-ECH 6.6 DME and on ANN VOR/DME R-338 to ANN VOR/DME and hold.

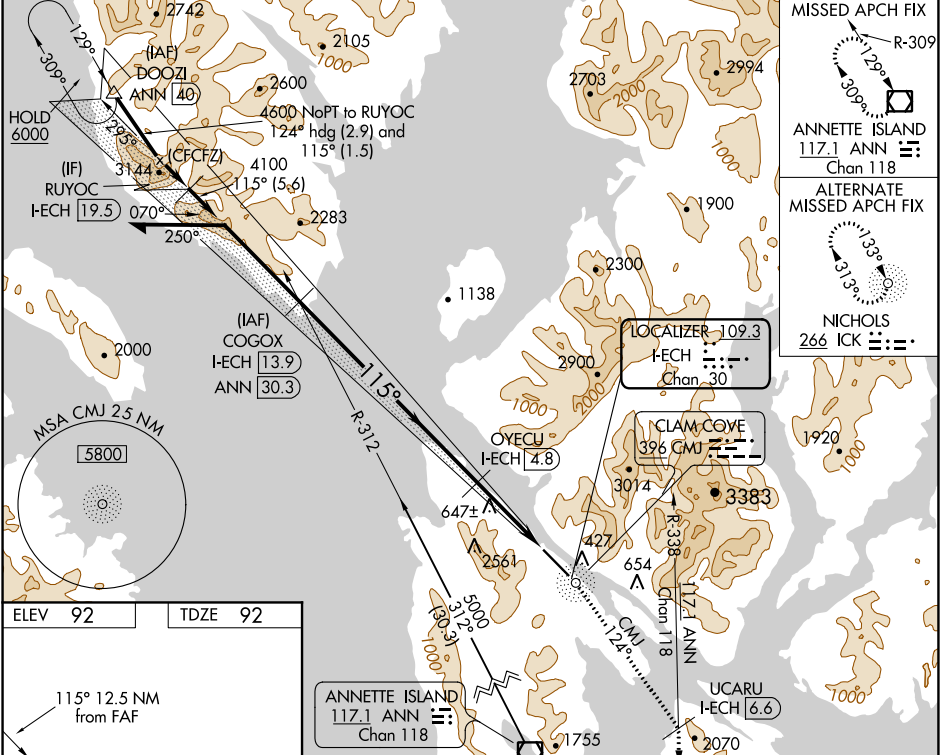
S-ILS 11 missed approach requires minimum climb of 305 feet per NM to 4000.

† S-ILS 11 missed approach requires minimum climb of 270 feet per NM to 4000.

S-LOC 11 missed approach requires minimum climb of 235 feet per NM to 4000.

If unable to meet climb gradients, see LOC X RWY 11.

AFIS 134.45	ANCHORAGE CENTER 118.5 284.6	KETCHIKAN RADIO 123.6 (CTAF)
-----------------------	--	--



ELEV **92** TDZE **92**

115° 12.5 NM from FAF

WATER RWY: WNW-ESE 9500 X 1500

HIRL Rwy 11-29

Use I-ECH DME when on the localizer course.

Remain within 10 NM

GS 3.00° TCH 50

COGOX I-ECH **13.9**

OYECU I-ECH **4.8**

UCARU I-ECH **6.6**

ANN R-338

ANN

*LOC only

*I-ECH 3.7

I-ECH **1.4**

9.1 NM 1.1 2.3 NM

CATEGORY	A	B	C	D
S-ILS 11 #		292/24	200 (200-½)	
S-ILS 11 †		481/45	389 (400-¾)	
S-LOC 11	880/24 788 (800-½)	880/40 788 (800-¾)	880-1¾	788 (800-1¾)