

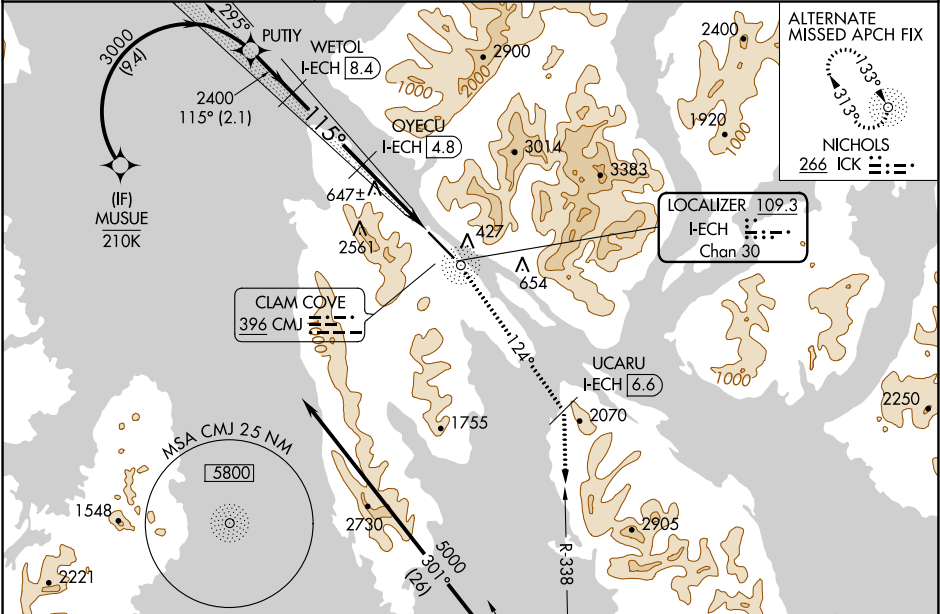
LOC/DME I-ECH 109.3 Chan 30	APP CRS 115°	Rwy Idg TDZE 92 Apt Elev 92	ILS Z or LOC Z RWY 11 KETCHIKAN INTL (KTN)(PAKT)
--	------------------------	---	---

RF, GPS, DME and ADF required. For inop MALS, increase S-LOC 11 Cats C and D visibility to 2½. # RVR 1800 authorized with the use of FD or AP or HUD to DA.

MALS

MISSED APPROACH: Climb to 5000 direct CMJ NDB and on CMJ NDB bearing 124° to UCARU I-ECH 6.6 DME and on ANN VOR/DME R-338 to ANN VOR/DME and hold.
S-ILS 11 missed approach requires minimum climb of 305 feet per NM to 4000.
S-LOC 11 missed approach requires minimum climb of 235 feet per NM to 4000.
If unable to meet climb gradients, see LOC X RWY 11.

AFIS 134.45	ANCHORAGE CENTER 118.5 284.6	KETCHIKAN RADIO 123.6 (CTAF)
-----------------------	--	--



ELEV 92

TDZE 92

115° 7 NM from FAF

117

7500 X 150

WATER RWY: WNN-ESE 9500 X 1500

HIRL Rwy 11-29

NICHOLS 266 ICK

Procedure NA for arrivals on ANN VOR/DME airway radials 290 CW 309.

IAF ANNETTE ISLAND 117.1 ANN Chan 118