

WAAS CH 45928 W17A	APP CRS 170°	Rwy Idg TDZE Apt Elev	6008 302 312
--	------------------------	-----------------------------	---

RNAV (GPS) RWY 17
ST MARY'S (KSM)(PASM)

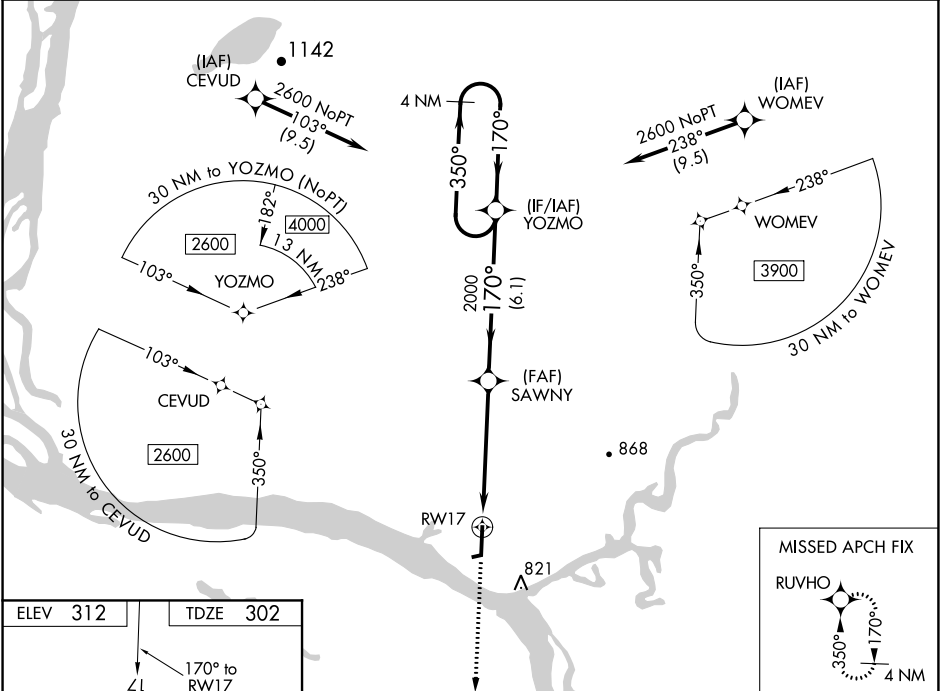
⚠ Inoperative table does not apply. Circling NA east of Rwy 17-35. DME/DME RNP-0.3 NA. When local altimeter setting not received, use Mountain Village altimeter setting and increase all DA/MDA 40 feet and all visibilities ¼ mile. VDP NA when using Mountain Village altimeter setting. For uncompensated Baro-VNAV systems, LNAV/VNAV NA below -25°C (-13°F) or above 42°C (107°F).

MALSR

AS

MISSED APPROACH: Climb to 2100 direct RUVHO and hold.

AWOS-3P 128.7	ANCHORAGE CENTER 124.0	CTAF 122.3
-------------------------	----------------------------------	----------------------



ELEV 312

TDZE 302

170° to RW17

6008 X 150

0.3% UP

1520 X 60

0.4% UP

REIL Rwy 35

HIRL Rwy 17-35

MIRL Rwy 6-24

2100	RUVHO	SAWNY	YOZMO	4 NM Holding Pattern
*LNAV only	*1.1 NM to RW17	2000	350° 2600	GP 3.00° TCH 51
1.1 NM	4.1 NM	6.1 NM		
CATEGORY	A	B	C	D
LPV DA	552-¾ 250 (300-¾)			
LNAV/VNAV DA	624-1 322 (300-1)			
LNAV MDA	700-1 398 (400-1)		700-1½ 398 (400-1½)	
CIRCLING	820-1 508 (600-1)		820-1½ 880-2 508 (600-1½) 568 (600-2)	

AK, 05 NOV 2020 to 31 DEC 2020

AK, 05 NOV 2020 to 31 DEC 2020