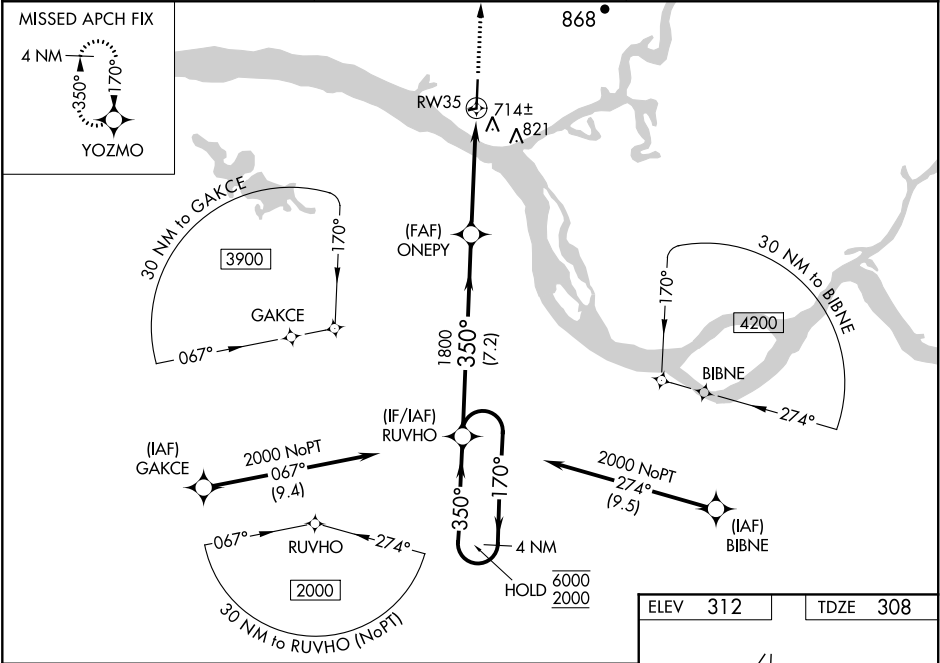


WAAS CH 87028 W35A	APP CRS 350°	Rwy Idg TDZE Apt Elev	6008 308 312
--	------------------------	-----------------------------	---

RNAV (GPS) RWY 35
ST MARY'S (KSM)(PASM)

RNP APCH. ▼ ▲ Circling NA east of Rwy 17-35. Rwy 35 helicopter visibility reduction below 1 SM NA. Baro-VNAV NA when using Mountain Village altimeter setting. For uncompensated Baro-VNAV systems, LNAV/VNAV NA below -19°C or above 54°C. When local altimeter setting not received, use Mountain Village altimeter setting and increase all DA 29 feet and all MDAs 40 feet and LNAV visibility Cat C/D ½ SM and Circling visibility Cat C ½ SM, Cat D ¼ SM.	MISSED APPROACH: Climb to 2600 direct YOZMO and hold.
---	--

AWOS-3P 128.7	ANCHORAGE CENTER 124.0	CTAF 122.3
-------------------------	----------------------------------	----------------------



4 NM Holding Pattern		VGSI and RNAV glidepath not coincident (VGSI Angle 3.00/TCH 33).		2600	YOZMO
6000 2000		RUVHO		ONEPY	RW35
GP 3.00° TCH 50		1800		1800	
170°		350°		7.2 NM	4.5 NM
CATEGORY	A	B	C	D	
LPV DA	508-1		200 (200-1)		
LNAV/VNAV DA	884-2		576 (600-2)		
LNAV MDA	960-1 652 (700-1)		960-17/8 652 (700-17/8)		
CIRCLING	960-1 648 (700-1)		960-17/8 648 (700-17/8)		960-2 648 (700-2)

