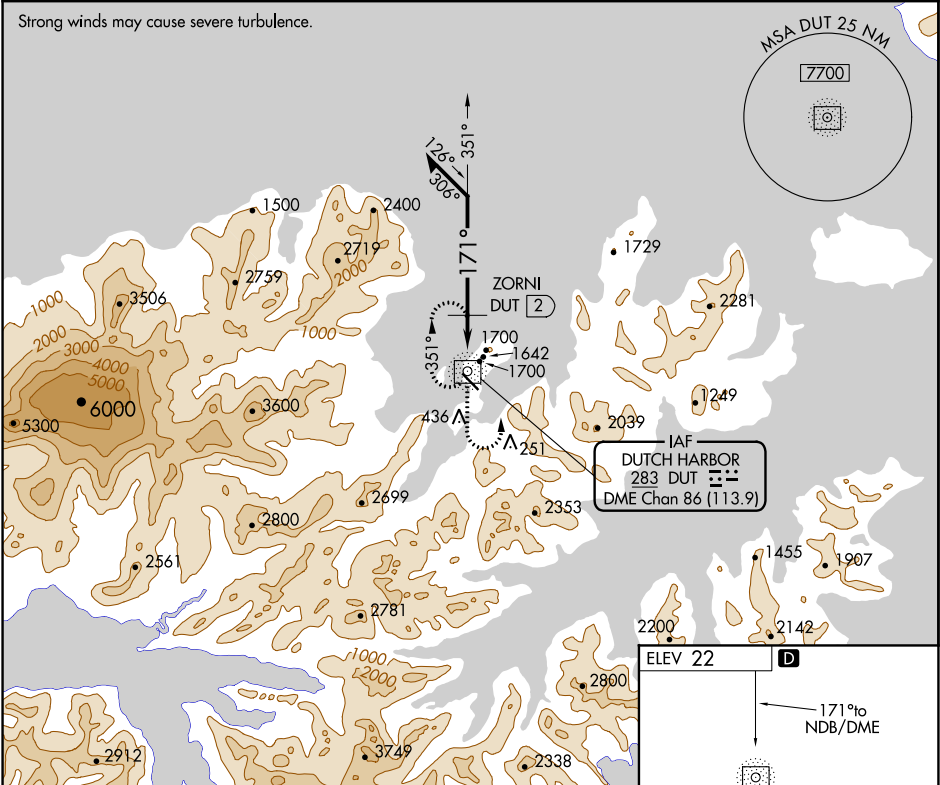


NDB/DME DUT 283	APP CRS 171°	Rwy Idg TDZE Apt Elev N/A 22	NDB-A UNALASKA (DUT) (PADU)
Chan 86 (113.9)			

⚠ Circling NA northeast of Rwy 12-30. Procedure NA at night. Helicopter visibility reduction below 1 SM NA. When local altimeter setting not received, use Akutan altimeter setting and increase all MDAs 100 feet. Descend to 6000 in holding pattern.

⚠ MISSED APPROACH: Climb to 3000 on DUT NDB/DME bearing 171° then climbing left turn to 4300 direct DUT NDB/DME and hold.

AWOS-3P 125.8	ANCHORAGE CENTER 121.4	CTAF 122.6 0 *
-------------------------	----------------------------------	--------------------------



Remain within 10 NM		DUT NDB/DME 6000	
4100		3000 4300 DUT	
351°		DUT 171°	
171°		* 3000 when using Akutan altimeter setting.	
* 2900		2 NM	
ZORNI DUT 2			
CATEGORY	A	B	C D
CIRCLING	2900-1¼ 2878 (2900-1¼)	2900-1½ 2878 (2900-1½)	2900-3 2878 (2900-3)
ZORNI FIX MINIMUMS (DME REQUIRED)			
CIRCLING	2200-1¼ 2178 (2200-1¼)	2200-1½ 2178 (2200-1½)	2320-3 2298 (2300-3) 2500-3 2478 (2500-3)

MIRL Rwy 13-31 0
REIL Rws 13 and 31 0