


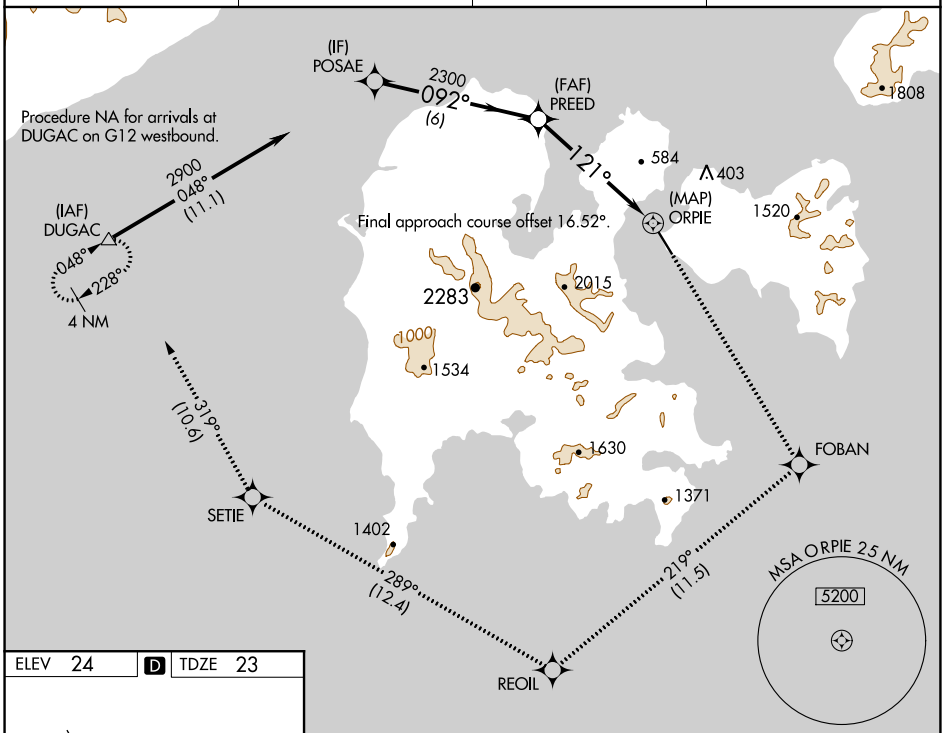
19115

WAAS CH 63041 W14A	APP CRS 121°	Rwy Idg 4099 TDZE 23 Apt Elev 24
--	------------------------	---

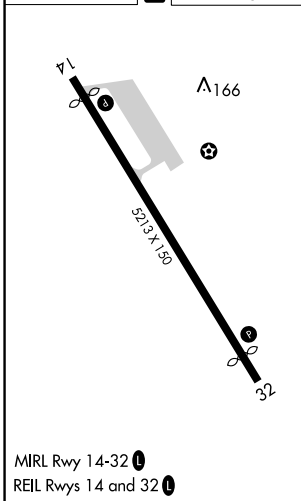
RNAV (GPS) RWY 14

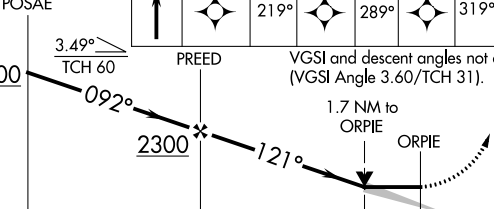

SAND POINT (SDP) (PASD)

	Circling NA northeast of Rwy 14-32. DME/DME RNP-0.3 NA.		MISSED APPROACH: Climb to 5000 direct FOBAN and on track 219° to REOIL and on track 289° to SETIE and on track 319° to DUGAC and hold.	
	AWOS-3P 134.85	ANCHORAGE CENTER 125.35 346.3	CLNC DEL 122.3 (CTAF) 0	UNICOM 122.8



ELEV 24	D	TDZE 23
---------	----------	---------



				
CATEGORY	A	B	C	D
LP MDA	720-1	697 (700-1)	720-2	697 (700-2)
LNAV MDA	860-1 837 (900-1)	860-1¼ 837 (900-¼)	860-2½	837 (900-2½)
 CIRCLING	860-1¼	836 (900-1¼)	1520-3 1496 (1500-3)	2200-3 2176 (2200-3)

SAND POINT, ALASKA
Amdt 1 13SEP18

55°19'N-160°31'W

SAND POINT (SDP) (PASD)
RNAV (GPS) RWY 14

AK, 05 NOV 2020 to 31 DEC 2020