

WAAS CH 63034 W19A	APP CRS 191°	Rwy Idg 3992 TDZE 19 Apt Elev 19
--	------------------------	---

RNAV (GPS) RWY 19

POINT HOPE (PHO) (PAPO)

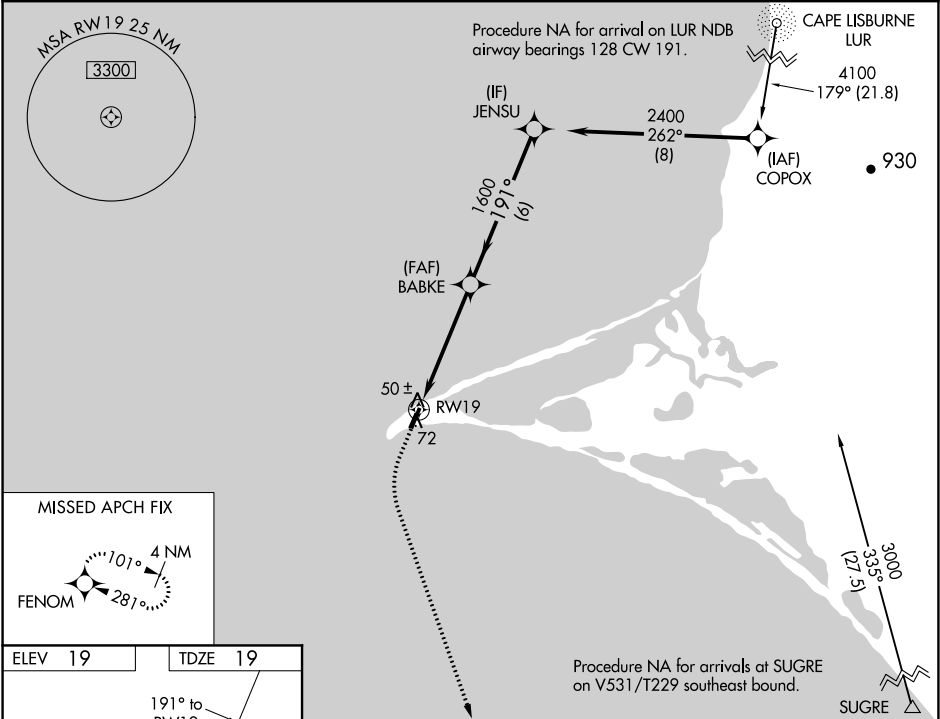
▼

▲ NA

For uncompensated Baro-VNAV systems, LNAV/VNAV NA below -20°C (-4°F) or above 54°C (130°F). When local altimeter setting not received, procedure NA. DME/DME RNP-0.3 NA.

MISSED APPROACH: Climb to 700 then climbing left turn to 2800 direct FENOM and hold.

AWOS-3P 118.325	ANCHORAGE CENTER 119.65 363.25	KOTZEBUE RADIO 122.25	CTAF 122.8 0
---------------------------	--	---------------------------------	------------------------



ELEV 19

TDZE 19

191° to RWY 19

61

3992 x 75

1

MIRL Rwy 1-19 0

700	2800	FENOM	VGSI and RNAV glidepath not coincident (VGSI Angle 3.00/TCH 27).			
*LNAV only		*0.9 NM to RWY 19	BABKE	JENSU	2400	
RWY 19		0.9 NM	3.9 NM	6 NM	GP 3.00° TCH 40	
CATEGORY	A	B	C	D		
LPV DA	269-1		250 (300-1)			
LNAV/VNAV DA	269-1		250 (300-1)			
LNAV MDA	360-1		341 (400-1)			
CIRCLING	380-1 361 (400-1)	480-1 461 (500-1)	480-1½ 461 (500-1½)	580-2 561 (600-2)		