

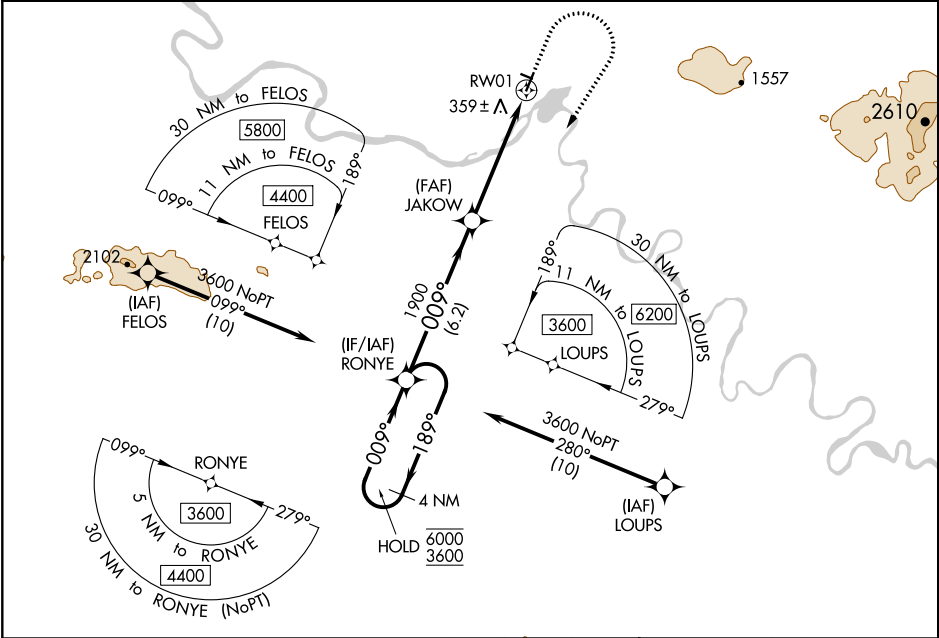
WAAS CH 40439 W01A	APP CRS 009°	Rwy Idg TDZE Apt Elev	4000 268 293
--	------------------------	-----------------------------	---

RNAV (GPS) RWY 1

AMBLER (AFM) (PAFM)

RNP APCH.	MISSED APPROACH: Climb to 1000 then climbing right turn to 3600 direct RONYE and hold, continue climb-in-hold to 3600. # Missed approach requires minimum climb of 210 feet per NM to 2300.
<div><div>▼</div><div>▲</div><div>❄</div></div> <div>Circling NA west of Rwy 1-19. For uncompensated Baro-VNAV systems, LNAV/VNAV NA below -20°C or above 42°C. -35°C</div>	

AWOS-3P 132.1	ANCHORAGE CENTER 119.2 263.0	KOTZEBUE RADIO 122.0	CTAF 122.7
-------------------------	--	--------------------------------	----------------------



VGSI and RNAV glidepath not coincident (VGSI Angle 3.00/TCH 25).				ELEV 293	TDZE 268
4 NM Holding Pattern RONYE				MIRL Rwy 1-19 and 10-28	
GP 3.00° TCH 40				2400 X 60 1.1% UP	
6.2 NM 2.8 NM 2.3 NM				4000 X 25 0.5% UP	
CATEGORY	A	B	C	D	
LPV DA#	518-1 250 (300-1)				
LPV DA	686-1 418 (400-1)				
LNAV/VNAV DA	811-1 543 (600-1)				
LNAV MDA	1000-1 732 (800-1)	1000-1 732 (800-1)	1000-1 732 (800-1)	732 (800-1)	
CIRCLING	1000-1 707 (800-1)	1000-1 707 (800-1)	1000-2 707 (800-2)	1000-2 707 (800-2)	