

WAAS	APP CRS	Rwy Idg	4500
CH 82135	344°	TDZE	29
W34A		Apt Elev	29

RNAV (GPS) RWY 34

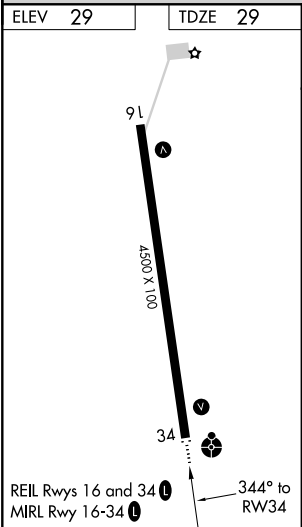
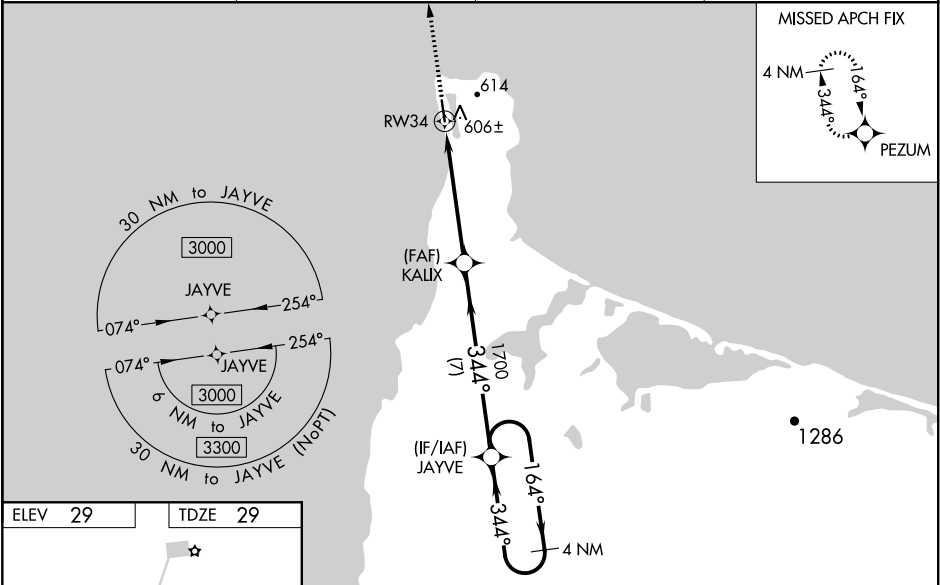
GAMBELL (GAM)(PAGM)





Baro-VNAV and VDP NA when using Savoonga altimeter setting. For uncompensated Baro-VNAV systems, LNAV/VNAV NA below -20°C (-4°F) or above 54°C (130°F). Circling NA NE of Rwy 16-34. DME/DME RNP-0.3 NA. When local altimeter setting not received, use Savoonga altimeter setting and increase all DA 82 feet, increase LPV all Cats visibility ¼ mile, and LNAV/VNAV all Cats visibility by 1 mile; increase all MDA 100 feet and LNAV visibility Cat B ¼ mile, Cat C and D ½ mile; increase Circling Cats B and C ¼ mile. For inop ODALS when using Savoonga altimeter setting increase LPV all Cats visibility ⅓ mile. For inop ODALS increase LPV all Cats visibility ⅓ mile. Inop table does not apply to LNAV/VNAV all Cats, and LNAV Cats C and D. When using Savoonga altimeter setting inop table does not apply to LNAV/VNAV all Cats, and LNAV Cats C and D.

ODALS

MISSED APPROACH:  
Climb to 3000  
direct PEZUM  
and hold.

AWOS-3P 125.9	ANCHORAGE CENTER 132.2 281.4	NOME RADIO 122.0	CTAF 122.7
------------------	---------------------------------	---------------------	---------------



<div>3000</div> <div>↑</div>		<div>PEZUM</div> <div></div>		<div>JAYVE</div> <div>4 NM Holding Pattern</div>	
*LNAV only.		<div>*2.8 NM to RW34</div> <div></div>		<div>KALIX</div> <div>1700</div>	
<div>RW34</div> <div></div>		<div>1700</div> <div>344°</div>		<div>3000</div> <div>164° →</div> <div>← 344°</div>	
				<div>GP 3.00°</div> <div>TCH 39°</div>	
CATEGORY		A	B	C	D
LPV DA	279-¾ 250 (300-¾)				
LNAV/VNAV DA	866-3 837 (900-3)				
LNAV MDA	960-1 931 (1000-1)			960-2½ 931 (1000-2½)	
 CIRCLING	960-1¼ 931 (1000-1¼)			960-2¾ 931 (1000-2¾)	960-3 931 (1000-3)