

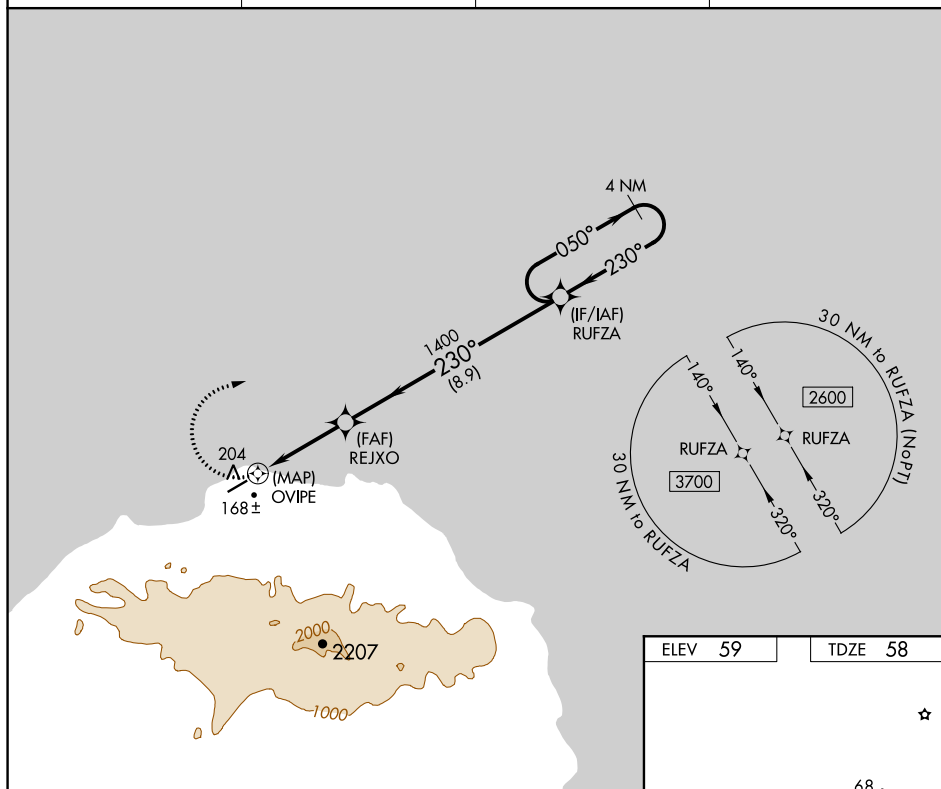
Rwy Idg	4400
TDZE	58
Apt Elev	59

RNAV (GPS) RWY 23
SAVOONGA (SVA) (PASA)

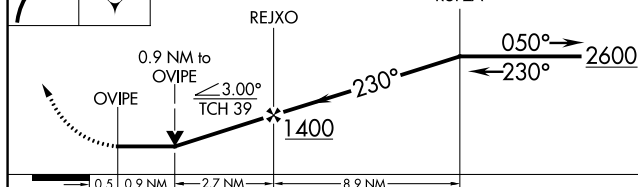
DME/DME RNP-0.3 NA. When local altimeter setting not received, use Gambell altimeter setting and increase all MDA 100 feet, and increase LNAV visibility Cat C and D ¼ mile and Circling Cat C visibility ⅓ mile. Circling NA southeast of Rwy 5-23. VDP NA with Gambell altimeter setting.

MISSED APPROACH: Climbing right turn to 2600 direct RUFZA and hold.

CTAF
122.7



VGSI and descent angles not coincident
(VGSI Angle 3.00/TCH 24).

4 NM
Holding Pattern

CATEGORY	A	B	C	D
LNAV MDA	520-1 462 (500-1)		520-1 $\frac{3}{8}$ 462 (500-1 $\frac{3}{8}$)	
CIRCLING	520-1 461 (500-1)		520-1 $\frac{1}{2}$ 461 (500-1 $\frac{1}{2}$)	620-2 561 (600-2)

