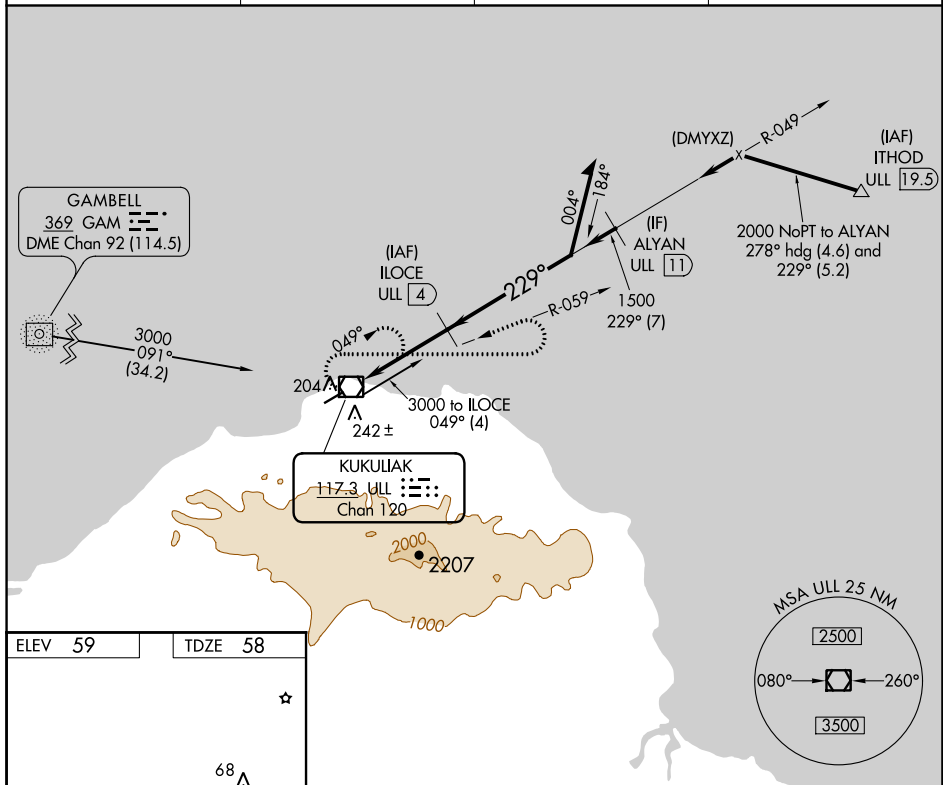


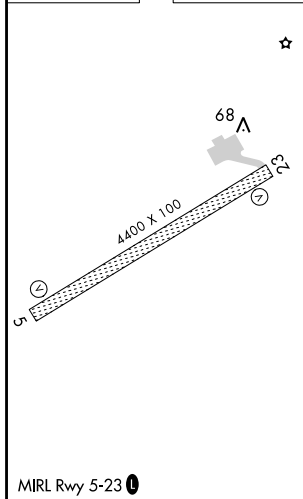
VOR/DME RWY 23
SAVOONGA (SVA) (PASA)

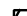
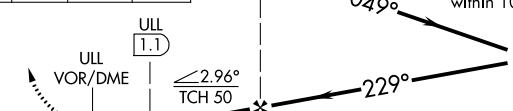

MISSED APPROACH: Climbing right turn to 3300 via heading 090° and via ULL VOR/DME R-059 then left turn via ULL VOR/DME R-059 to ULL VOR/DME and hold.

AWOS-3P 121.3	ANCHORAGE CENTER 132.2 281.4	NOME RADIO 122.3	CTAF 122.7 0
-------------------------	--	----------------------------	------------------------



ELEV 59		TDZE 58
---------	--	---------



3300 hdg 090°	ULL R-059	ULL R-059	ULL 	ILOCE ULL <u>4</u>	VGS1 and descent angles not coincident (VGS1 Angle 3.00/TCH 24).	
						
						
CATEGORY	A		B		C	D
S-23	600-1	542 (600-1)			600-1½ 542 (600-1½)	600-1¾ 542 (600-1¾)
CIRCLING	600-1	541 (600-1)			600-1½ 541 (600-1½)	620-2 561 (600-2)