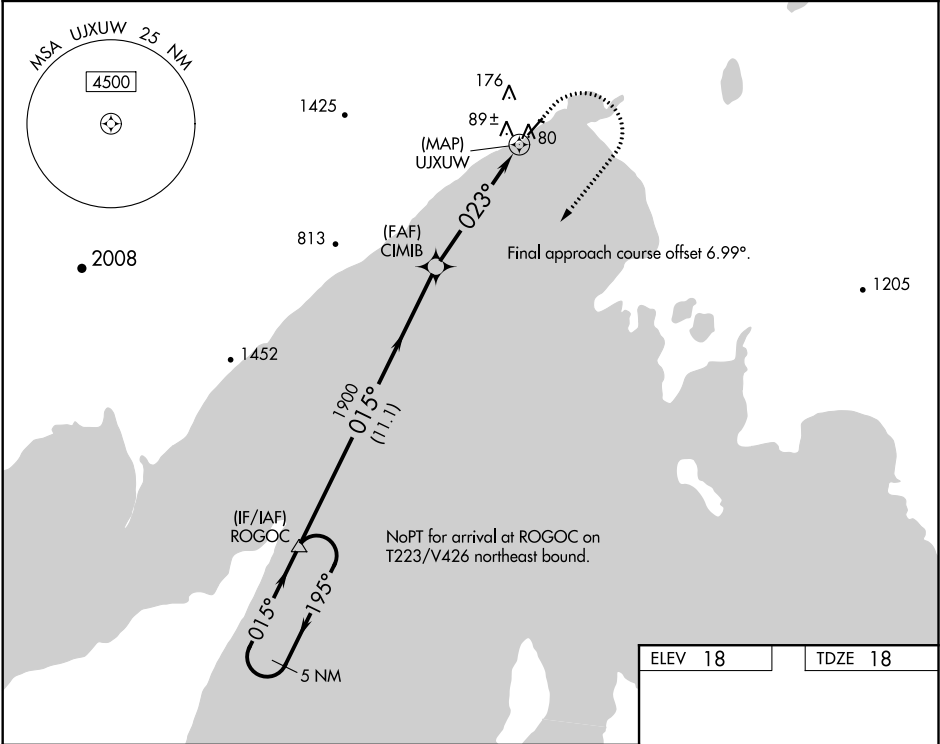


WAAS CH 69441 W03A	APP CRS 023°	Rwy Idg 4400 TDZE 18 Apt Elev 18
--	------------------------	---

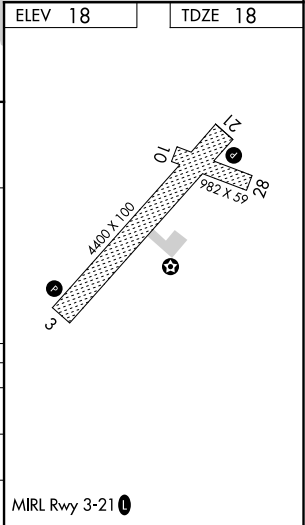
RNAV (GPS) RWY 3
TOGIAK (TOG)(PATG)

<p>⚠ Circling NA northwest of Rwy 3-21. ⚠ Rwy 3 helicopter visibility reduction below 1 SM NA. DME/DME RNP-0.3 NA. Procedure NA at night.</p>	<p>MISSED APPROACH: Climb to 420 then climbing right turn to 4400 direct ROGOC and hold, continue climb-in-hold to 4400.</p>
---	--

AWOS-3P 119.3	ANCHORAGE CENTER 132.75 282.35	CTAF 122.5
-------------------------	--	----------------------



5 NM Holding Pattern		VGSI and descent angles not coincident (VGSI Angle 3.00/TCH 25).		420	4400	ROGOC
				↑	↘	△
ROGOC		CIMIB		UJXUW		
4400		1900		11.1 NM		
195°		015°		5.3 NM		
015°		023°		0.5 NM		
CATEGORY	A	B	C	D		
LP MDA	380-1		362 (400-1)			
LNNAV MDA	400-1	382 (400-1)	400-1½	382 (400-1½)		
C CIRCLING	400-1 382 (400-1)	480-1 462 (500-1)	480-1½ 462 (500-1½)	800-2½ 782 (800-2½)		



AK, 05 NOV 2020 to 31 DEC 2020

AK, 05 NOV 2020 to 31 DEC 2020