

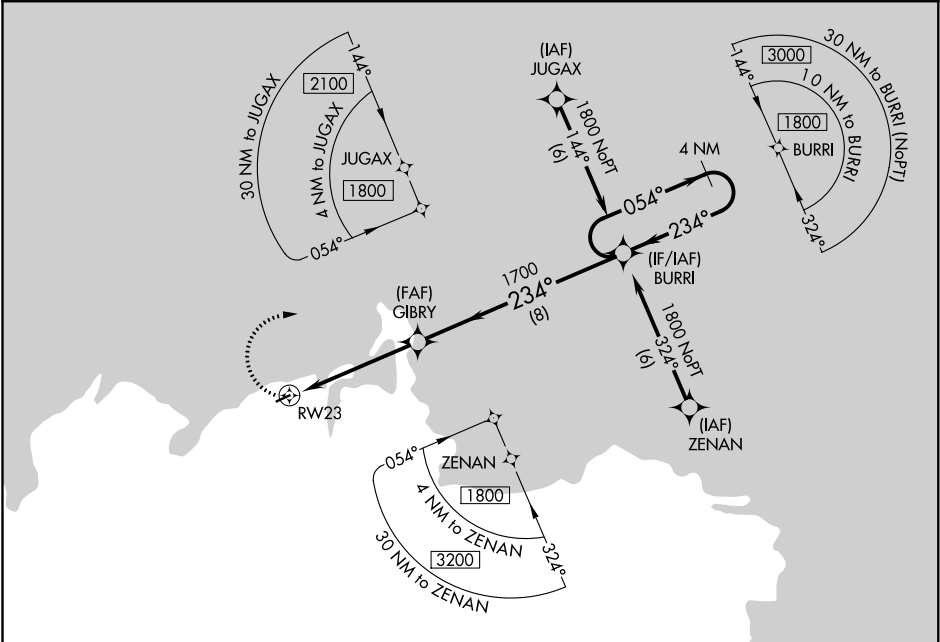
APP CRS	Rwy Idg	3001
234°	TDZE	53
	Apt Elev	53

RNAV (GPS) RWY 23

MEKORYUK (MYU) (PAMY)

<div><div></div><div></div></div>	DME/DME RNP-0.3 NA.	MISSED APPROACH: Climbing right turn to 1800 direct BURRI and hold.
-----------------------------------	---------------------	---

AWOS-3P 123.9	ANCHORAGE CENTER 124.5 372.0	KENAI RADIO 122.0	CTAF 122.9 0
------------------	---------------------------------	----------------------	-----------------



• 763

1800

BURRI

VGSI and descent angle not coincident
(VGSI Angle 3.00/ TCH 29).

GIBRY

BURRI

4 NM Holding Pattern

1.6 NM to RWY23

≤3.04° TCH 38

1700

234°

054°

1800

1.6

3.4 NM

8 NM

CATEGORY	A	B	C	D
LNVA MDA	600-1 547 (600-1)	600-1½ 547 (600-1½)	600-1¾ 547 (600-1¾)	600-2 547 (600-2)
CIRCLING	600-1 547 (600-1)	600-1½ 547 (600-1½)	600-1¾ 547 (600-1¾)	600-2 547 (600-2)

MRL Rwy 5-23 0

ELEV 53

TDZE 53

234° to RWY23

3001 X 75