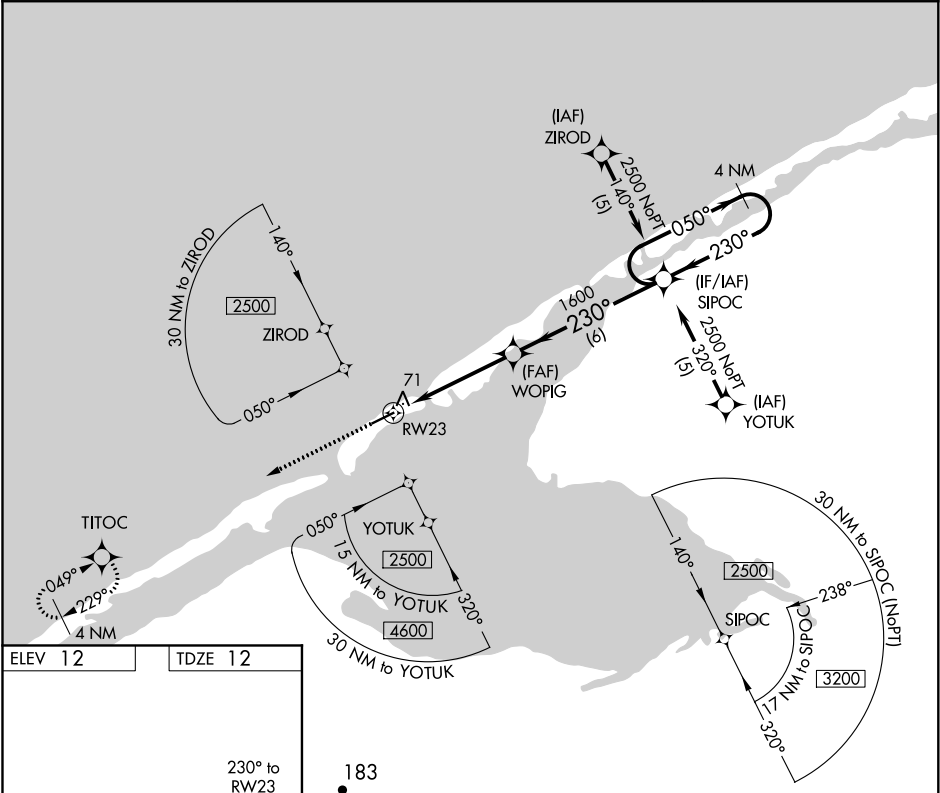


APP CRS <b>230°</b>	Rwy Idg <b>4997</b> TDZE <b>12</b> Apt Elev <b>12</b>
------------------------	---

**RNAV (GPS) RWY 23**  
SHISHMAREF (SHH) (PASH)

DME/DME RNP-0.3 NA.		MISSED APPROACH: Climb to 2500 direct TITOC and hold.	
AWOS-3P <b>121.1</b>	ANCHORAGE CENTER <b>119.2 263.0</b>	NOME RADIO <b>122.4</b>	CTAF <b>123.0</b>



ELEV 12 TDZE 12		183	
MIRL Rwy 5-23		VGSI and descent angles not coincident (VGSI Angle 3.00/TCH 25).	
TITOC		SIPOC	
RWY 23		Holding Pattern	
1.1 NM to RWY 23		WOPIG	
3.04° TCH 45		1600	
1.1		3.7 NM	
6 NM		4 NM	
CATEGORY	A	B	C
LNAV MDA	380-1	368 (400-1)	380-1¼
CIRCLING	420-1	480-1	480-1½
	408 (500-1)	468 (500-1)	468 (500-1½)
			580-2
			568 (600-2)

AK, 05 NOV 2020 to 31 DEC 2020

AK, 05 NOV 2020 to 31 DEC 2020