

APP CRS	Rwy Idg	4000
351°	TDZE	290
	Apt Elev	309

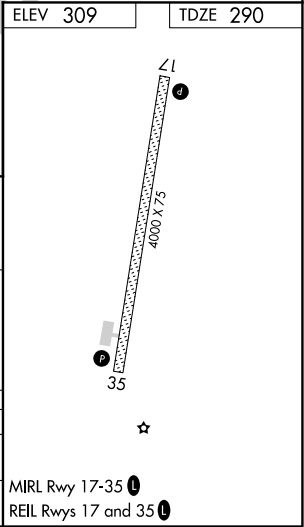
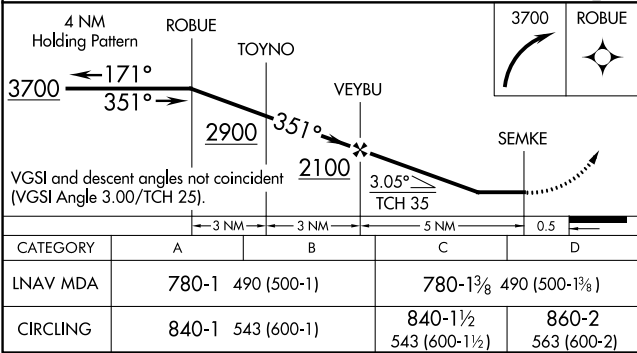
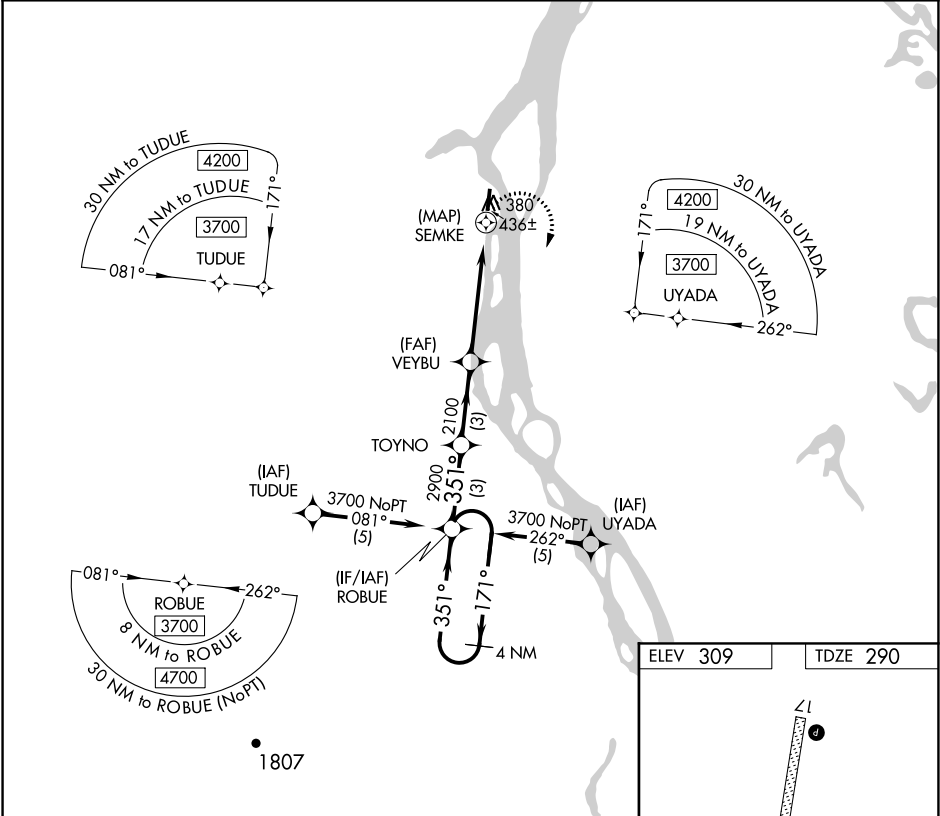
RNAV (GPS) RWY 35  
ANVIK (ANV)(PANV)

DME/DME RNP-0.3 NA. When local altimeter setting not received, use Holy Cross altimeter setting and increase all MDAs 120 feet and LNAV visibility Cat C/D 3/8 mile, and Circling visibility Cat D 1/2 mile.

MISSED APPROACH: Climbing right turn to 3700 direct ROBUE and hold, continue climb-in-hold to 3700.

-32°C

AWOS-3P 133.55	ANCHORAGE CENTER 135.7 335.5	KENAI RADIO 122.4	UNICOM 122.7 (CTAF) 0
-------------------	---------------------------------	----------------------	--------------------------



AK, 05 NOV 2020 to 31 DEC 2020

AK, 05 NOV 2020 to 31 DEC 2020