

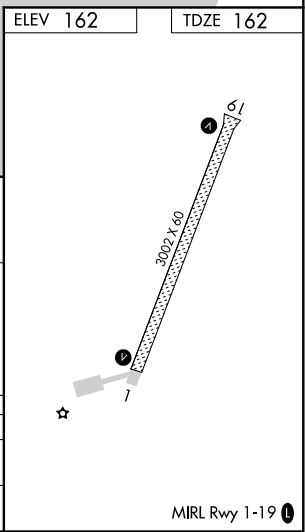
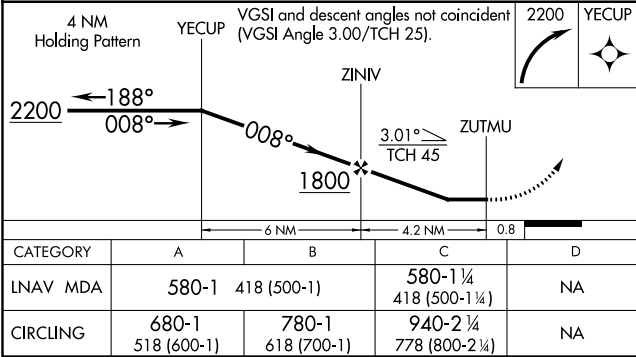
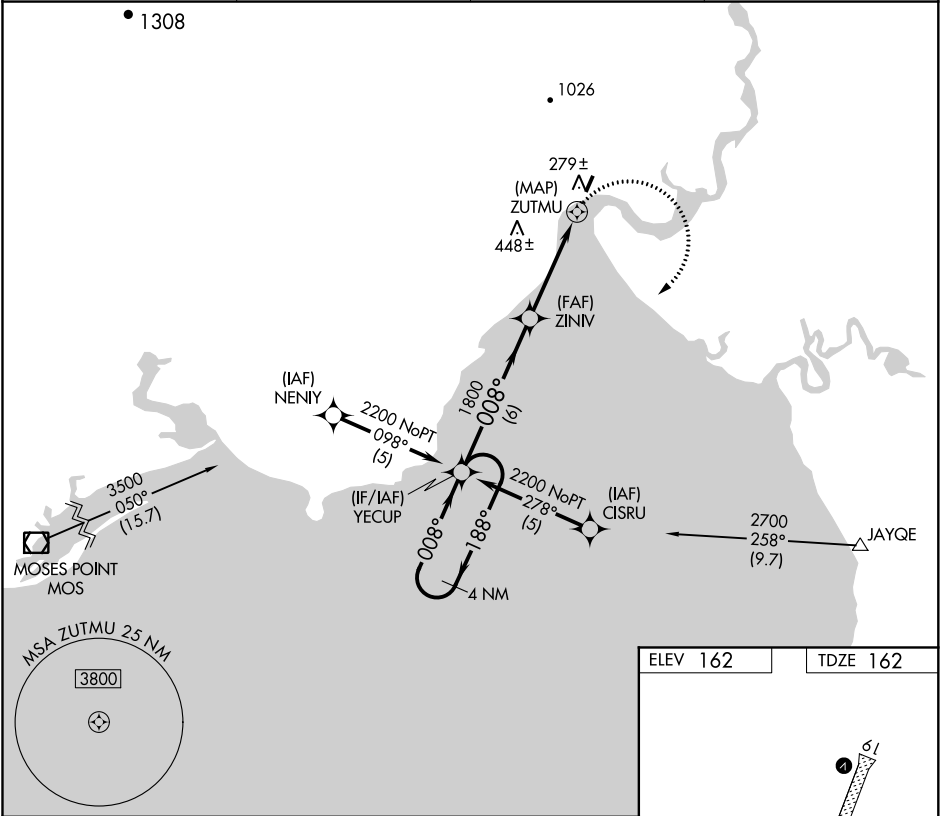
APP CRS	Rwy Idg	3002
008°	TDZE	162
	Apt Elev	162

RNAV (GPS) RWY 1

KOYUK ALFRED ADAMS (KKA)(PAKK)

<div><div>⚠</div><div><p>Circling NA west of Rwy 1-19. When VGSI inoperative, procedure NA at night. DME/DME RNP- 0.3 NA.</p></div></div> <div><p>MISSED APPROACH: Climbing right turn to 2200 direct YECUP and hold.</p></div>

AWOS-3P 134.95	ANCHORAGE CENTER 135.7 335.5	NOME RADIO 122.35	CTAF 122.8 0
-------------------	---------------------------------	----------------------	-----------------



AK, 05 NOV 2020 to 31 DEC 2020

AK, 05 NOV 2020 to 31 DEC 2020