

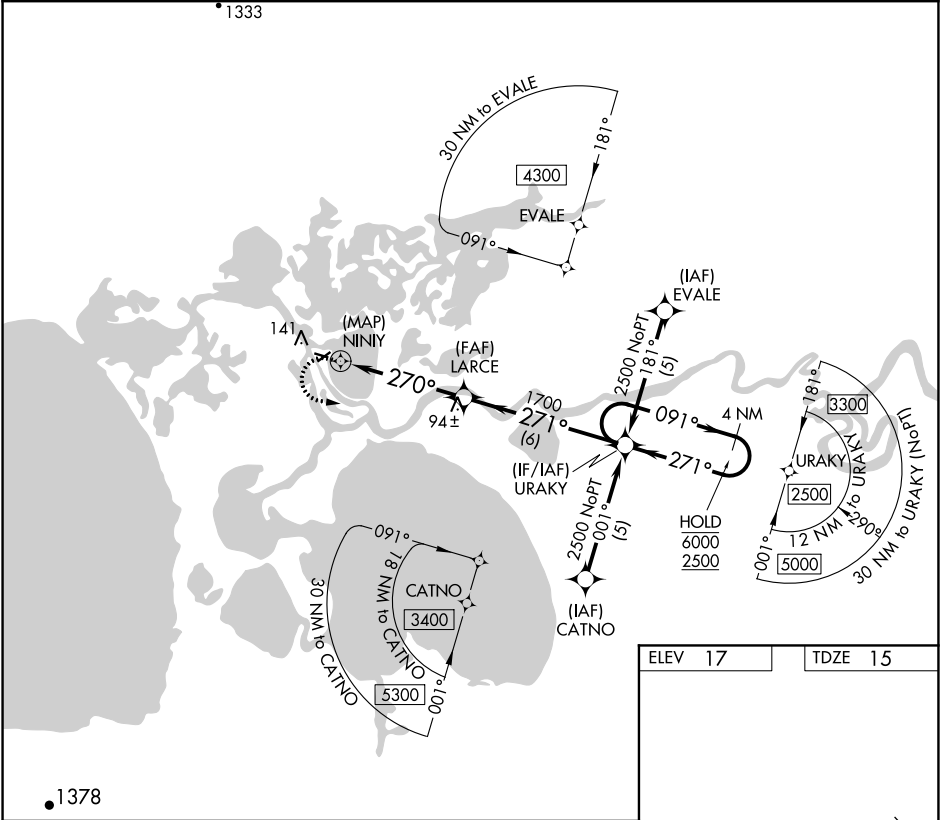
APP CRS 270°	Rwy Idg 2659
TDZE 15	
Apt Elev 17	

RNAV (GPS) RWY 27

SELAWIK (WLK) (PASK)

RNP APCH.	MISSED APPROACH: Climbing left turn to 2500 direct URAKY and hold.
<div><div>▼</div><div>Rwy 27 helicopter visibility reduction below 1 SM NA. Straight-in and Circling Rwy 27 NA at night, Circling Rwy 9 NA at night.</div></div>	

AWOS-3P 135.65	ANCHORAGE CENTER 119.2 263.0	KOTZEBUE RADIO 122.5	CTAF 122.7
--------------------------	--	--------------------------------	----------------------



<div><div>2500</div><div>URAKY</div></div>	VGSI and descent angles not coincident (VGSI Angle 3.00/TCH 25).			
<div><div><div>NINIY</div><div>LARCE</div><div>URAKY</div></div><div>4 NM Holding Pattern</div></div>				
<div><div>0.5</div><div>4.6 NM</div><div>6 NM</div></div>				
CATEGORY	A	B	C	D
LNNAV MDA	420-1	405 (500-1)	420-1¼	405 (500-1¼)
CIRCLING	480-1	463 (500-1)	480-1½ 463 (500-1½)	580-2 563 (600-2)

