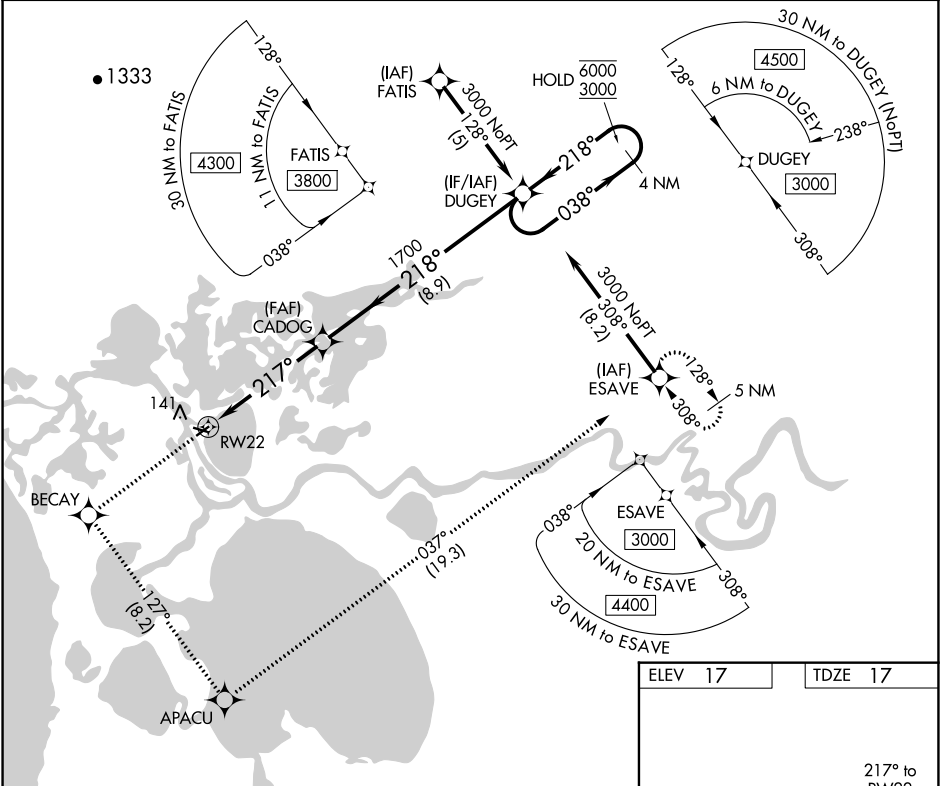


WAAS CH <b>40404</b> <b>W22A</b>	APP CRS <b>217°</b>	Rwy Idg <b>3002</b> TDZE <b>17</b> Apt Elev <b>17</b>
--	------------------------	---

RNAV (GPS) Z RWY 22

SELAWIK (WLK) (PASK)

RNP APCH. ▼ -36°C For uncompensated Baro-VNAV systems, LNAV/VNAV NA below -25°C or above 49°C.		MISSED APPROACH: Climb to 3000 direct BECAY and left turn on track 127° to APACU and left turn on track 037° to ESAVE and hold.	
AWOS-3P <b>135.65</b>	ANCHORAGE CENTER <b>119.2 263.0</b>	KOTZEBUE RADIO <b>122.5</b>	CTAF <b>122.7 0</b>



3000	BECAY	APACU	ESAVE	DUGEY
↑	✦	✦	✦	✦
	tr 127°	tr 037°		
CADOG				
RW22				
5.1 NM				
8.9 NM				
4 NM Holding Pattern				
GP 3.00° TCH 45				
CATEGORY	A	B	C	D
LPV DA	267-1	250 (300-1)		
LNAV/VNAV DA	364-1¼	347 (400-1¼)		

