

VOR RWY 22
SELAWIK (WLK) (PASK)

Circling Rwy 9, 27 NA at night.

MISSED APPROACH: Climb to 1000 then climbing left turn to 2500 direct WLK VOR/DME and hold, continue climb-in-hold to 2500.

AWOS-3P 135.65	ANCHORAGE CENTER 119.2 263.0	KOTZEBUE RADIO 122.5	CTAF 122.7 0
--------------------------	--	--------------------------------	------------------------

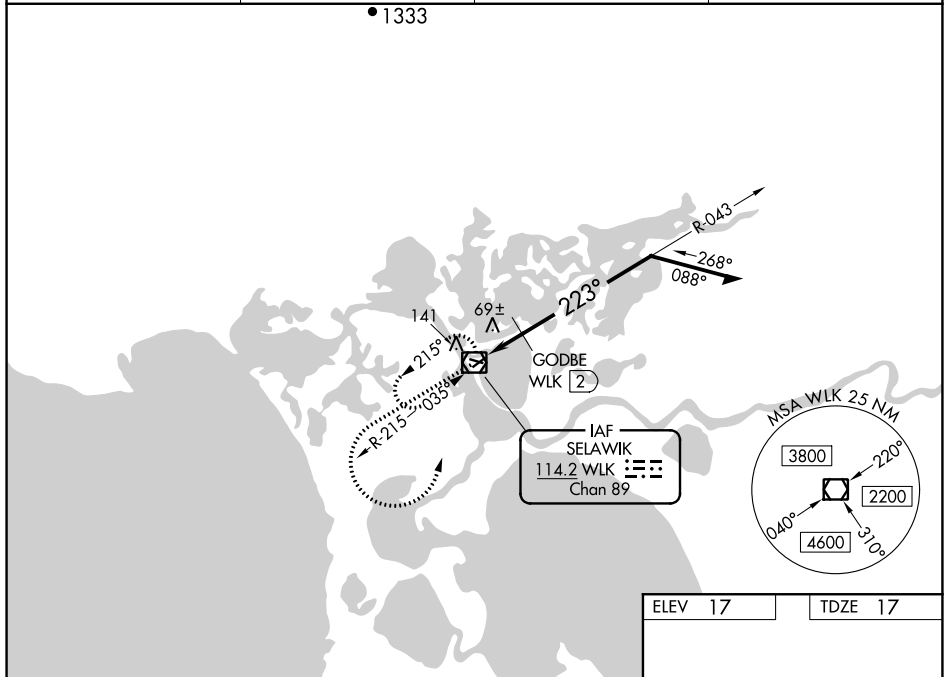
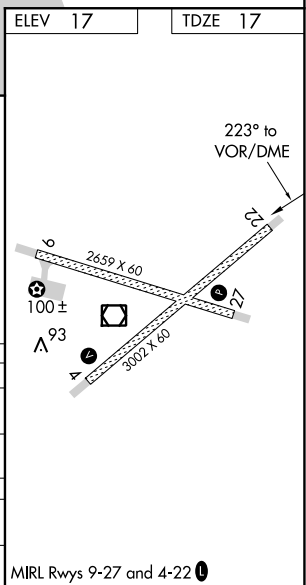


Diagram illustrating the VOR/DME station and associated obstacles:

- 1000** (MSL) obstacle at **2500** (DME).
- WLK** (Obstacle) symbol.
- 2500** (DME) distance to the 1000 MSL obstacle.
- 400** (MSL) obstacle at **1.6 NM** distance.
- 1600** (MSL) obstacle at **2.23°** bearing.
- GODBE WLK** (Obstacle) symbol.
- 223°** bearing to the 1600 MSL obstacle.
- 1000** (MSL) obstacle at **2500** (DME).
- 2500** (DME) distance to the 1000 MSL obstacle.
- 1.6 NM** distance to the 400 MSL obstacle.
- 2.23°** bearing to the 1600 MSL obstacle.
- 1600** (MSL) obstacle at **2.23°** bearing.



AK, 05 NOV 2020 to 31 DEC 2020