

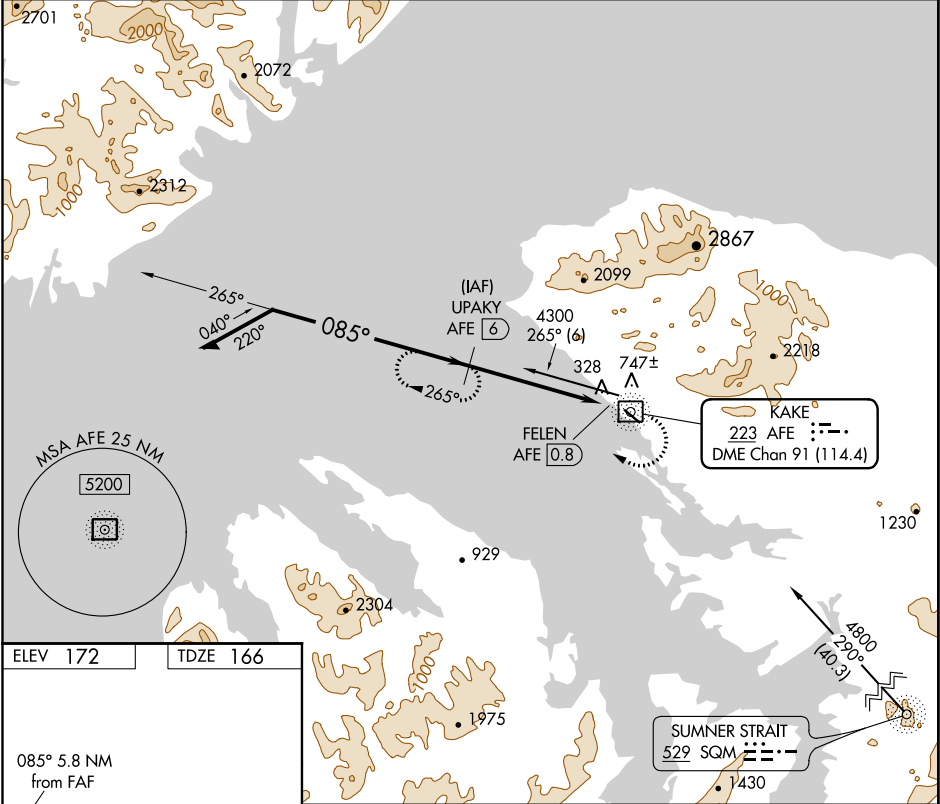
NDB/DME AFE	APP CRS	Rwy Idg	4000
223	085°	TDZE	166
Chan 91 (114.4)		Apt Elev	172

NDB/DME RWY 11  
KAKE (AFE)(PAFE)

**⚠** Circling NA north of Rwy 11-29. When local altimeter setting not received use Petersburg James A Johnson altimeter setting and increase all MDAs 100 feet, and increase Cats B and C visibility ¼ mile. Circling Rwy 29 NA at night. Rwy 11 helicopter visibility reduction below ¾ SM NA.

**MISSED APPROACH:** Climb to 1200 then climbing right turn to 4300 via heading 325° and 265° bearing from AFE NDB/DME to UPAKY/6 DME and hold.

AWOS-3P	ANCHORAGE CENTER	SITKA RADIO	CTAF
135.25	118.0 132.175	121.3 122.65	122.9 0



ELEV 172 TDZE 166

085° 5.8 NM from FAF

0.5% UP

4000 x 100

REIL Rwy 11 0

MIRL Rwy 11-29 0

Remain within 10 NM	UPAKY AFE 6	1200	4300	AFE 265°	UPAKY AFE 6
4300	265°	hdg 325°			
085°					
2400					
VGSI and descent angles not coincident (VGSI Angle 3.00/TCH 41).					
		3.59°			
		TCH 41			
		5.2 NM			
		0.6			
CATEGORY	A	B	C	D	
S-11	1100-1¼ 934 (1000-1¼)		1100-2¾ 934 (1000-2¾)	NA	
CIRCLING	1100-1¼ 928 (1000-1¼)		1100-2¾ 928 (1000-2¾)	NA	