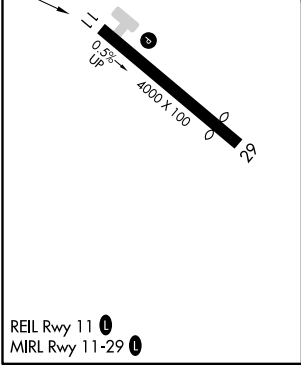
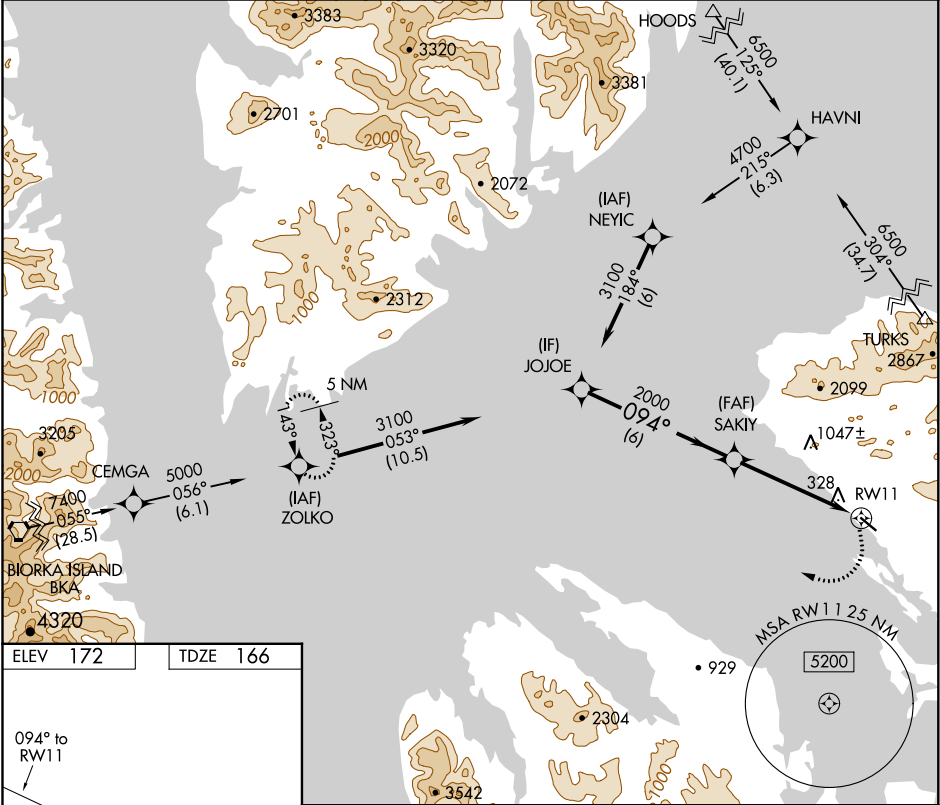


APP CRS 094°	Rwy Idg TDZE Apt Elev	4000 166 172
------------------------	-----------------------------	---

RNAV (GPS) RWY 11
KAKE (AFE)(PAFE)

RNP APCH.	MISSED APPROACH: Climbing right turn to 5000 direct ZOLKO and hold.
Circling NA north of Rwy 11-29. When local altimeter setting not received, use Petersburg James A Johnson altimeter setting and increase all MDAs 100 feet. Circling Rwy 29 NA at night. Rwy 11 helicopter visibility reduction below ¾ SM NA.	

AWOS-3P 135.25	ANCHORAGE CENTER 118.0 132.175	SITKA RADIO 121.3 122.65	CTAF 122.9 0
--------------------------	--	------------------------------------	------------------------



VGSI and descent angles not coincident. (VGSI Angle 3.00/TCH 41).				5000	ZOLKO
JOJOE				3100	
Procedure Turn NA				094°	
SAKIY				2000	
RWY 11				3.41°	
TCH 41					
6 NM				5 NM	
CATEGORY	A	B	C	D	
LNNAV MDA	1120-1¼ 954 (1000-1¼)	1120-1½ 954 (1000-1½)	1120-3 954 (1000-3)	NA	
CIRCLING	1120-1¼ 948 (1000-1¼)	1120-1½ 948 (1000-1½)	1120-3 948 (1000-3)	NA	