

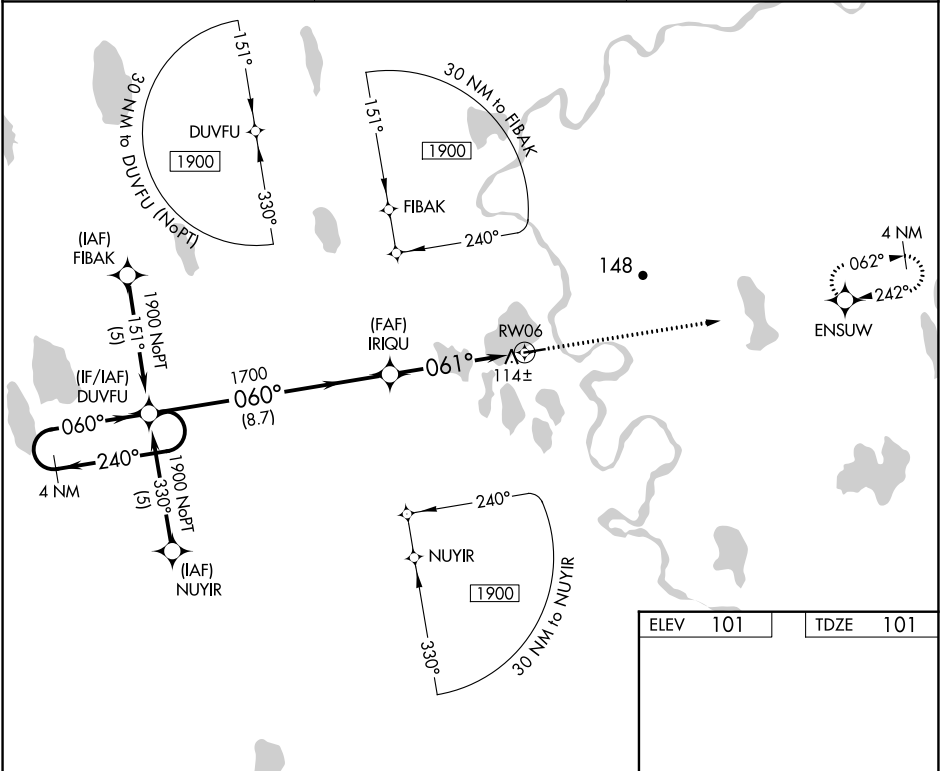
APP CRS	Rwy Idg	4370
061°	TDZE	101
	Apt Elev	101

RNAV (GPS) RWY 6

ATQASUK EDWARD BURNELL SR MEMORIAL (ATK)(PATQ)

<p>▼ ▲ ❄ -43°C</p>	<p>DME/DME RNP-0.3 NA. If local altimeter setting not received, use Barrow altimeter setting and increase all MDAs 140 feet. VDP NA when using Barrow altimeter setting</p>	<p>MISSED APPROACH: Climb to 1900 direct ENSUW and hold.</p>
----------------------------	---	--

AWOS-3P 119.925	ANCHORAGE CENTER 135.3 239.25	CTAF 122.9 0
--------------------	----------------------------------	-----------------



4 NM Holding Pattern		DUVFU		IRIQU		1900		ENSUW	
1900		060°		060°		061°		061° to RW06	
4 NM		8.7 NM		4 NM		0.9 NM		0.9 NM to RW06	
CATEGORY		A		B		C		D	
LNAV MDA		420-1		319 (400-1)		NA		NA	
CIRCLING		480-1		560-1		560-1½		NA	
		379 (400-1)		459 (500-1)		459 (500-1½)			
								REIL Rwy 6 and 24 0	
								MIRL Rwy 6-24 0	

RNAV (GPS) RWY 6

AK, 05 NOV 2020 to 31 DEC 2020

AK, 05 NOV 2020 to 31 DEC 2020