

WAAS CH 61108 W21A	APP CRS 212°	Rwy Idg TDZE 217 Apt Elev 220
--	------------------------	---

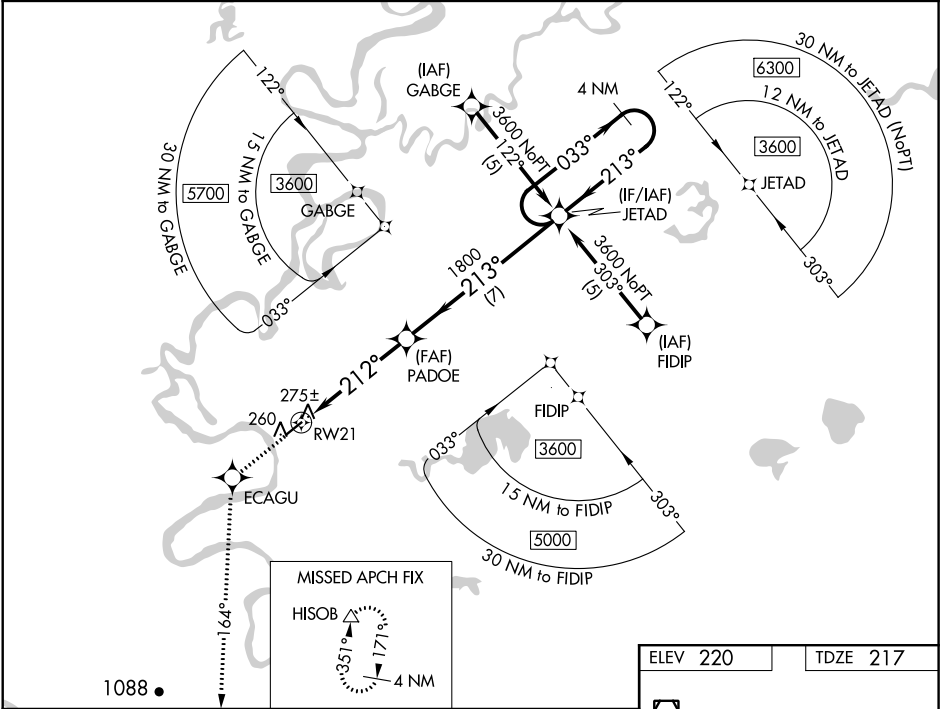
RNAV (GPS) RWY 21




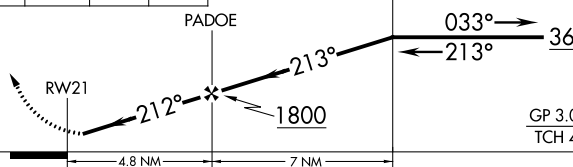
HUSUA (HLA)(PAHL)

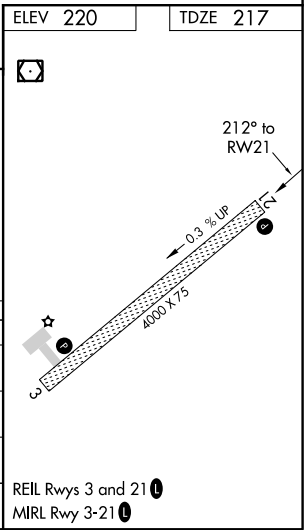
⚠ For uncompensated Baro-VNAV systems, LNAV/VNAV NA below -25°C (-13°F) or above 48°C (118°F). Helicopter visibility reduction below ¾ SM NA. DME/DME RNP-0.3 NA.

MISSED APPROACH: Climb to 3000 direct ECAGU and via 164° track to HISOB and hold.

AWOS-3P 135.75	ANCHORAGE CENTER 127.0 290.2	FAIRBANKS RADIO 122.4	UNICOM 122.8 (CTAF) 0
--------------------------	--	---------------------------------	---------------------------------



3000	ECAGU	HISOB	VGSI and RNAV glidepath not coincident (VGSI Angle 3.00/TCH 25).			
		tr 164°				
						
CATEGORY	A		B	C	D	
LPV DA	517-1 300 (300-1)					
LNAV/VNAV DA	549-1¼ 332 (400-1¼)					
LNAV MDA	540-1 323 (400-1)					
CIRCLING	600-1 380 (400-1)	680-1 460 (500-1)	680-1½ 460 (500-1½)	780-2 560 (600-2)		



AK, 05 NOV 2020 to 31 DEC 2020

AK, 05 NOV 2020 to 31 DEC 2020