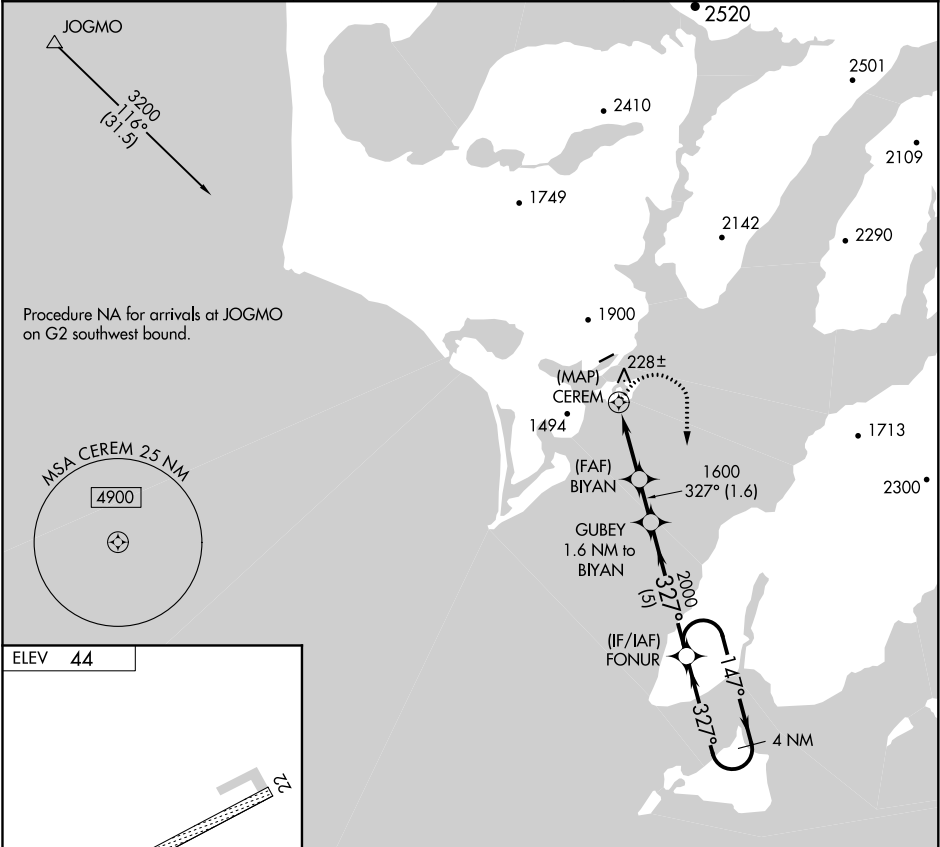


APP CRS 327°	Rwy Idg TDZE Apt Elev 44	N/A N/A 44	RNAV (GPS)-A AKHIOK (AKK) (PAKH)
-----------------	-----------------------------------	------------------	-------------------------------------

<div><div></div><div></div></div> <div>DME/DME RNP-0.3 NA. Procedure NA at night. Circling NA northwest of Rwy 4/22. If local altimeter setting not received, use Kodiak altimeter setting and increase all MDAs 800 feet.</div>	MISSED APPROACH: Climbing right turn to 3200 direct FONUR WP and hold.
--	--

AWOS-3P 118.325	ANCHORAGE CENTER 125.1 281.4	UNICOM 122.8 (CTAF)
--------------------	---------------------------------	------------------------



<div><div></div><div></div></div> <div>ELEV 44</div>	<div><div></div><div></div></div> <div>3200 FONUR</div>	<div><div></div><div></div></div> <div>GUBEY 1.6 NM to BIYAN</div>	<div><div></div><div></div></div> <div>FONUR 4 NM Holding Pattern</div>
<div><div></div><div></div></div> <div>CEREM</div>	<div><div></div><div></div></div> <div>BIYAN</div>	<div><div></div><div></div></div> <div>2000</div>	<div><div></div><div></div></div> <div>3200</div>
<div><div></div><div></div></div> <div>1.6</div>	<div><div></div><div></div></div> <div>2.9 NM</div>	<div><div></div><div></div></div> <div>1.6 NM</div>	<div><div></div><div></div></div> <div>5 NM</div>
CATEGORY	A	B	C D
CIRCLING	580-2	536 (600-2)	NA