

WAAS CH 40425 W10A	APP CRS 097°	Rwy Idg TDZE 233 Apt Elev 249
--	------------------------	---

RNAV (GPS) RWY 10

WARREN "BUD" WOODS PALMER MUNI (PAQ) (PAAQ)

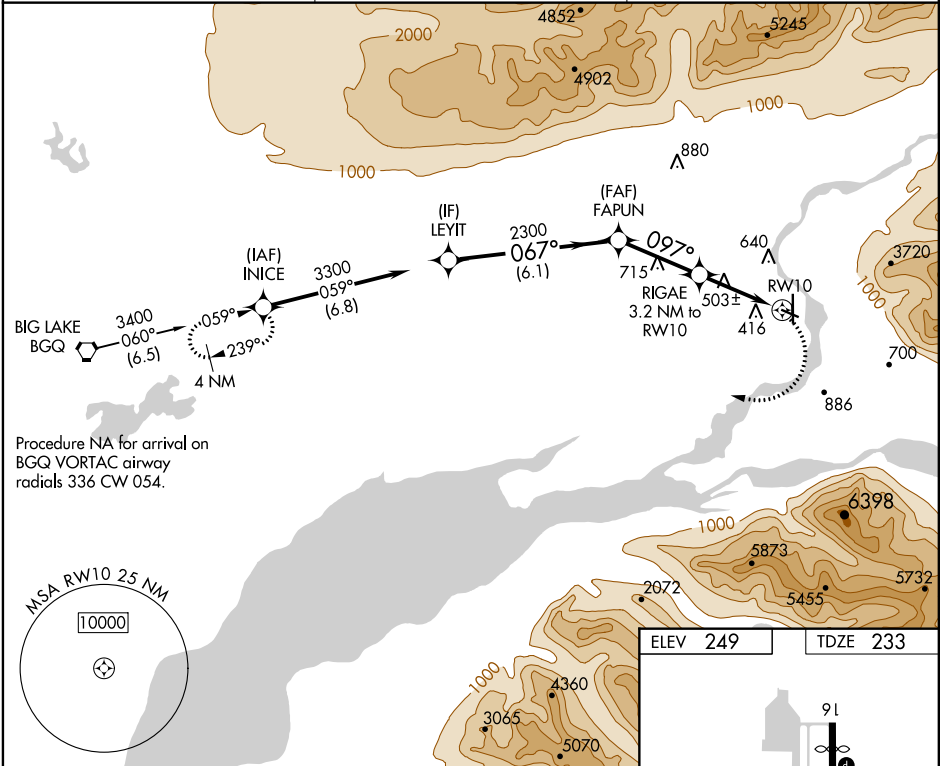
RNP APCH.

⚠

Circling NA northeast of Rwy 16-28. Procedure NA at night.
Rwy 10 helicopter visibility reduction below 1 SM NA.

MISSED APPROACH: (Do not exceed 185K until INICE)
Climbing right turn to 3600 direct INICE and hold.

ASOS 134.75	ANCHORAGE APP CON 118.6 290.5	PALMER RADIO 123.6 (CTAF) 0 122.4
-----------------------	---	---



LEYIT					VGSIs and descent angles not coincident (VGSIs Angle 3.00/TCH 27).					3600 INICE				
3300					067°					097°				
6.1 NM					3.2 NM					3.2 NM				
CATEGORY	A		B		C		D							
LP MDA	760-1	527	(600-1)		760-1½	527	(600-1½)							
LNAV MDA	820-1	587	(600-1)		820-1⅝	587	(600-1⅝)							
CIRCLING	860-1	611	(700-1)		940-1	691	(700-1)		1300-3	1051	(1100-3)			

