

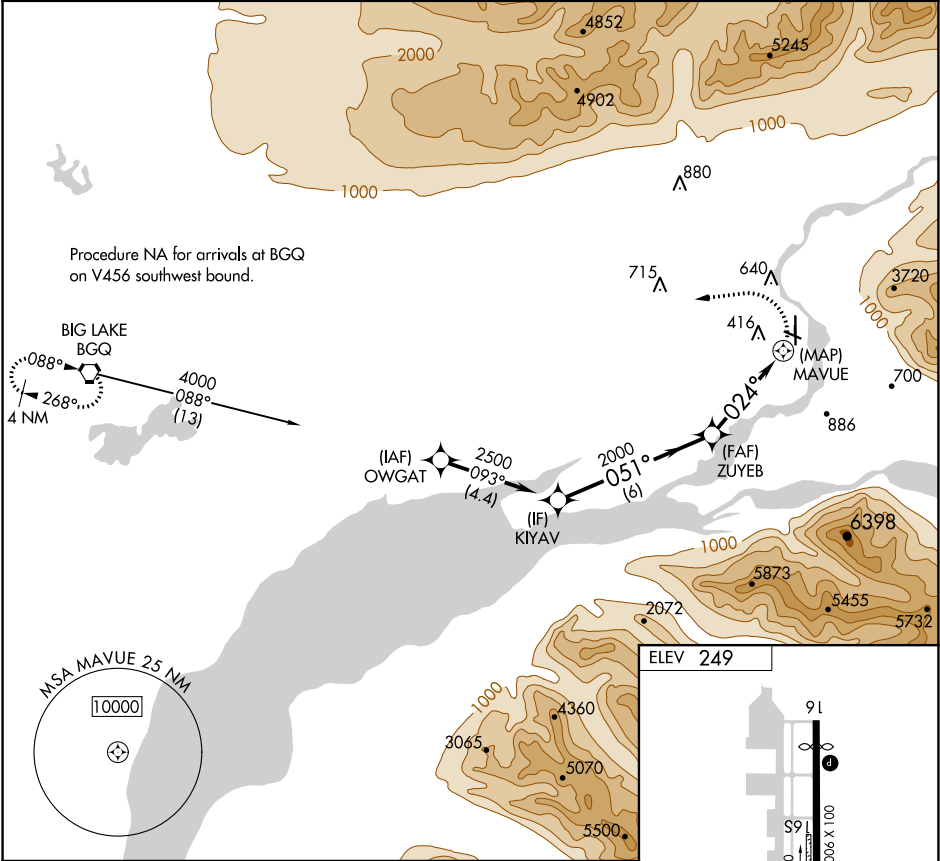
APP CRS	Rwy Idg	N/A
024°	TDZE	N/A
	Apt Elev	249

RNAV (GPS)-A

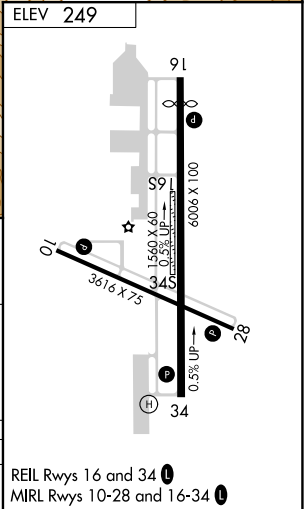
WARREN "BUD" WOODS PALMER MUNI (PAQ) (PAAQ)

RNP APCH.	MISSED APPROACH: Climbing left turn to 4500 direct BGQ VORTAC and hold.
<div><div></div><div></div></div> <div>Circling NA northeast of Rwy 16-28. Procedure NA at night.</div>	

ASOS 134.75	ANCHORAGE APP CON 118.6 290.5	PALMER RADIO 123.6 (CTAF) 0 122.4
----------------	----------------------------------	--------------------------------------



	KIYAV	ZUYEB	MAVUE
	2500	2000	
	051°	024°	
	6 NM	3.9 NM	
CATEGORY	A	B	C
CIRCLING	860-1¼ 611 (700-1¼)	940-1¼ 691 (700-1¼)	1300-3 1051 (1100-3)



RNAV (GPS)-A