

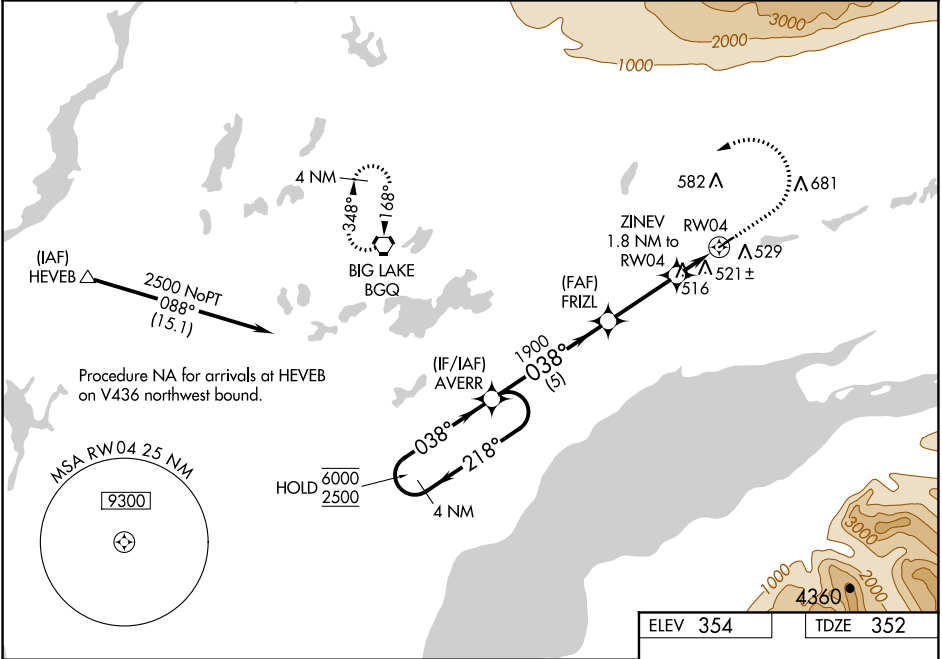
WAAS CH <b>53636</b> <b>W04A</b>	APP CRS <b>038°</b>	Rwy Idg TDZE Apt Elev	<b>3700</b> <b>352</b> <b>354</b>
--	------------------------	-----------------------------	---

RNAV (GPS) RWY 4

WASILLA (IYS) (PAWS)

RNP APCH.	<div><div>⚠</div><div>⚠</div><div>❄ -31°C</div></div> <div>Circling NA to Rwy 4S and 22S. Baro-VNAV and VDP NA when using Palmer altimeter setting. For uncompensated Baro-VNAV systems, LNAV/VNAV NA below -20°C or above 54°C. When local altimeter setting not received, use Palmer altimeter setting and increase all DA 46 feet, all MDA 60 feet and all visibilities ¼ mile.</div>	MISSED APPROACH: Climb to 1000 then climbing left turn to 3000 direct BQG VORTAC and hold.
-----------	--	--

AWOS-3P <b>135.25</b>	ANCHORAGE APP CON <b>119.1 363.2</b>	CTAF <b>122.8 0</b>
--------------------------	---	------------------------



4 NM Holding Pattern		VGSI and RNAV glidepath not coincident (VGSI Angle 3.00/TCH 25).		1000	3000	BQG
6000 ← 218°		2500 → 038°		1900	*LNAV only.	
GP 3.00°		TCH 45		*960		
5 NM		3 NM		0.5 NM	1.3 NM	
CATEGORY		A	B	C	D	
LPV DA		602-¾	250 (300-¾)	NA		
LNAV/VNAV DA		828-1⅝	476 (500-1⅝)	NA		
LNAV MDA		780-1	428 (500-1)	NA		
CIRCLING		1000-1	646 (700-1)	NA		

