

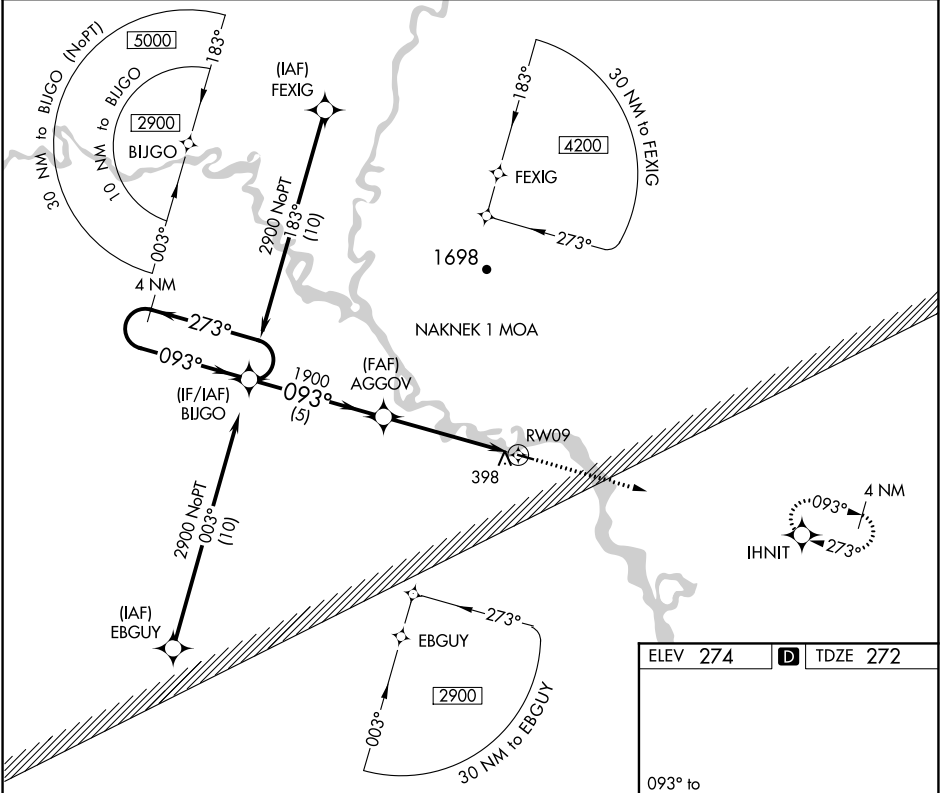
APP CRS	Rwy Idg	3300
093°	TDZE	272
	Apt Elev	274

RNAV (GPS) RWY 9
KOLIGANEK (JZZ) (PAJZ)

⚠ When local altimeter setting not received, use new Stuyahok altimeter setting and increase all MDA 60 feet. DME/DME RNP-0.3 NA.
⚠ Helicopter visibility reduction below 1 SM NA. Procedure NA at night.

MISSED APPROACH: Climb to 3400 direct IHNIT and hold, continue climb-in-hold to 3400.

AWOS-3P 118.525	ANCHORAGE CENTER 132.75 282.35	DILLINGHAM RADIO 122.55	CTAF 122.9
--------------------	-----------------------------------	----------------------------	---------------



4 NM Holding Pattern

BIJGO

AGGOV

2900 ← 273°

093° →

093°

1900

3.06° TCH 40

RW09

5 NM

5 NM

3400

IHNIT

CATEGORY	A	B	C	D
LNAV MDA	720-1	448 (500-1)	NA	
CIRCLING	720-1 446 (500-1)	740-1 466 (500-1)	NA	

ELEV 274

TDZE 272

093° to RW09

1.0% Up

3300 X 75

MIRL Rwy 9-27

AK, 05 NOV 2020 to 31 DEC 2020

AK, 05 NOV 2020 to 31 DEC 2020