

WAAS CH 97341 W03A	APP CRS 027°	Rwy Idg TDZE Apt Elev 3320 25 30
--	------------------------	--

RNAV (GPS) RWY 3

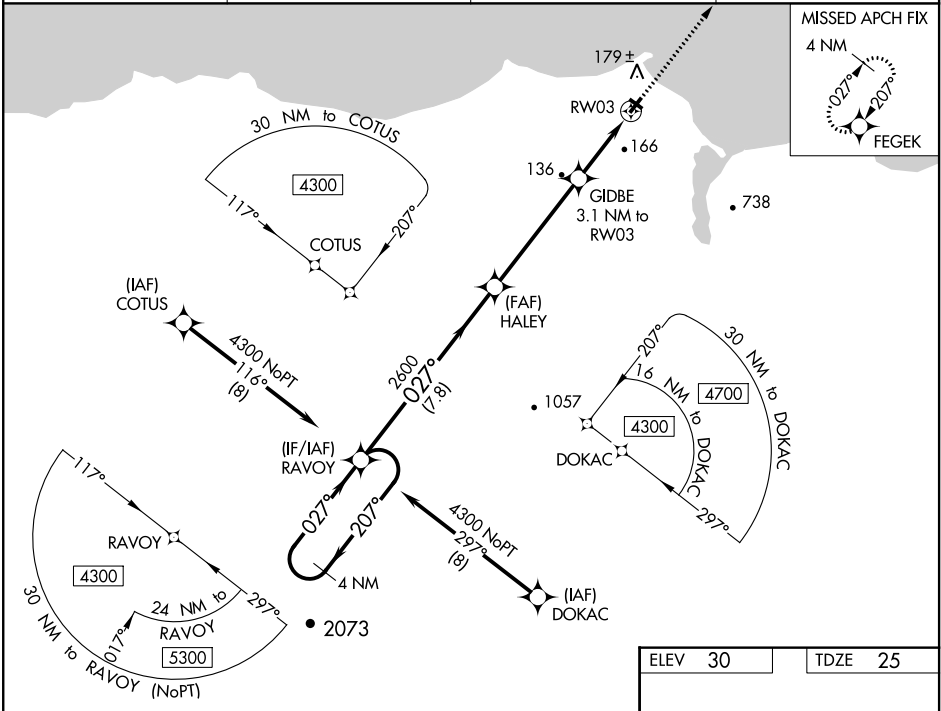
DEERING (DEE)(PADE)

W Circling to Rwy 12, 30 NA at night. For uncompensated Baro-VNAV systems, LNAV/VNAV NA below -19°C (-2°F) or above 54°C (130°F).

A -39°C DME/DME RNP-0.3 NA.

MISSED APPROACH: Climb to 3700 direct FEGEK and hold, continue climb-in-hold to 3700.

ASOS 135.5	ANCHORAGE CENTER 119.2 263.0	KOTZEBUE RADIO 122.25	CTAF 122.9
----------------------	--	---------------------------------	----------------------



4 NM Holding Pattern RAVOY VGSI and RNAV glidepath not coincident (VGSI Angle 3.00/TCH 25).

4300 ← 207° 027° → 2600

GP 3.00° TCH 45

HALEY 2600 GIDBE 3.1 NM to RW03

*1040

*1.2 NM to RW03

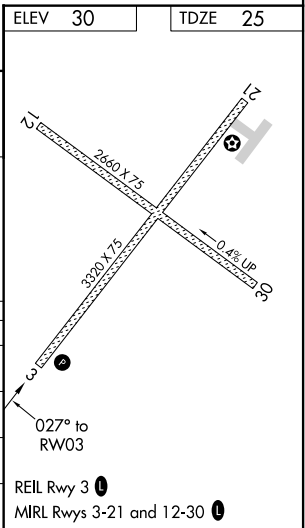
RW03

3700 FEGEK

*LNAV only

7.8 NM 4.9 NM 1.9 NM 1.2

CATEGORY	A	B	C	D
LPV DA	275-1	250 (300-1)		NA
LNAV/VNAV DA	275-1	250 (300-1)		NA
LNAV MDA	420-1	395 (400-1)	420-1 395 (400-1 1/8)	NA
CIRCLING	680-1 650 (700-1)	840-1 810 (900-1)	840-2 810 (900-2 1/4)	NA



AK, 05 NOV 2020 to 31 DEC 2020

AK, 05 NOV 2020 to 31 DEC 2020