

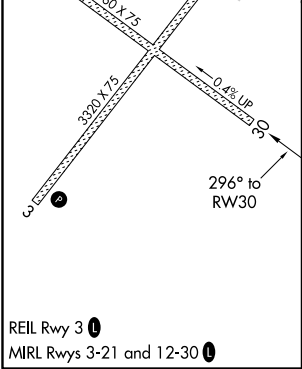
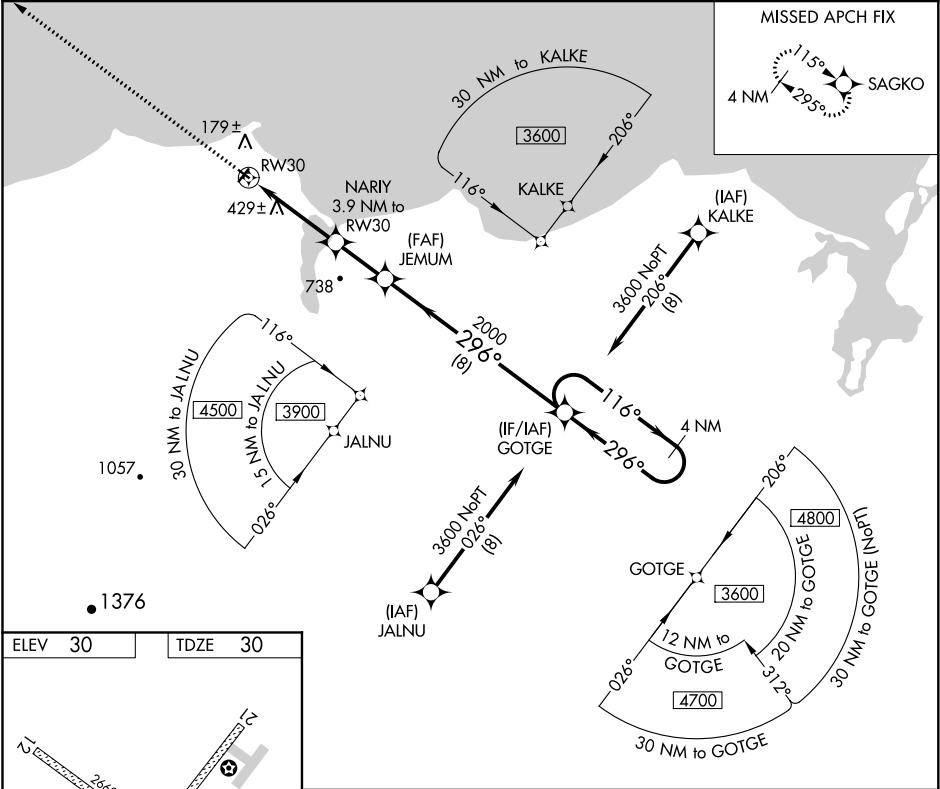


APP CRS	Rwy Idg	2660
296°	TDZE	30
	Apt Elev	30

RNAV (GPS) RWY 30  
DEERING (DEE)(PADE)

 DME/DME RNP-0.3 NA. Rwy 30 helicopter visibility reduction below 1 SM NA.  -39°C Straight-in Rwy 12 NA at night, Circling Rwy 12, 30 NA at night.	MISSED APPROACH: Climb to 3000 direct SAGKO and hold.
--	---

ASOS 135.5	ANCHORAGE CENTER 119.2 263.0	KOTZEBUE RADIO 122.25	CTAF 122.9
---------------	---------------------------------	--------------------------	---------------



AK, 05 NOV 2020 to 31 DEC 2020

AK, 05 NOV 2020 to 31 DEC 2020