

APP CRS  
**204°**

Rwy Idg  
TDZE  
**61**

**3220**  
Apt Elev  
**61**

**RNAV (GPS) RWY 20**

CHEVAK (VAK)(PAVA)

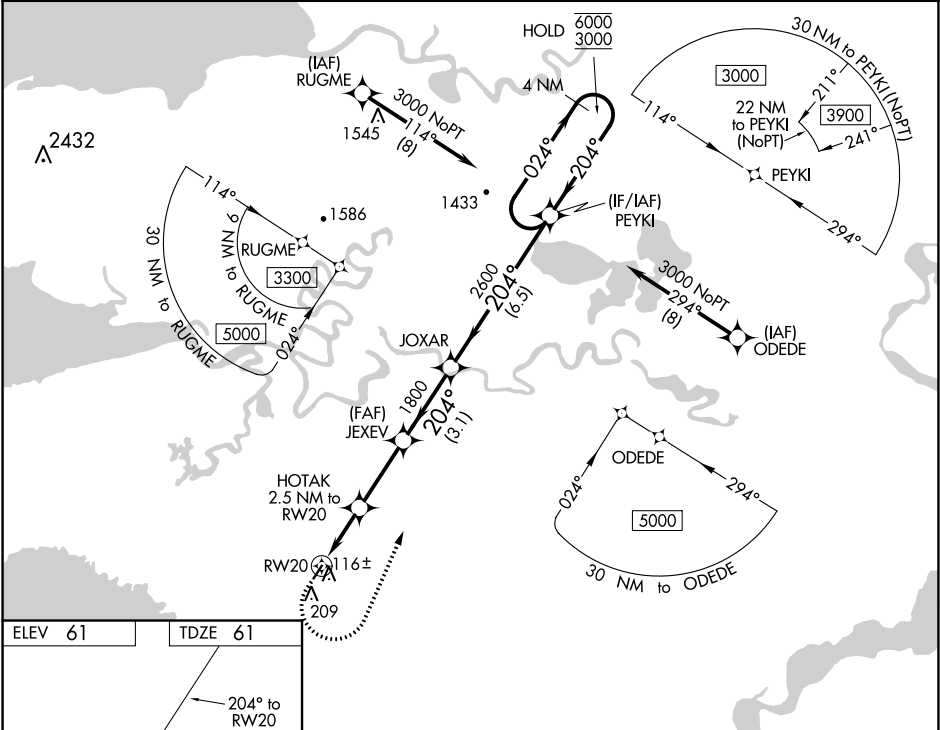
RNP APCH.

▼

For uncompensated Baro-VNAV systems, LNAV/VNAV NA below -20°C or above 54°C.

MISSED APPROACH: Climb to 500. Then climbing left turn to 3000 direct PEYKI and hold.

AWOS-3P <b>120.625</b>	ANCHORAGE CENTER <b>124.5</b>	UNICOM <b>122.8</b>	CTAF <b>123.0</b> <b>0</b>
---------------------------	----------------------------------	------------------------	-------------------------------



ELEV 61

TDZE 61

500

3000

PEYKI

VGSI and RNAV glidepath not coincident (VGSI Angle 3.00/TCH 25).

4 NM Holding Pattern

\*LNAV only

HOTAK 2.5 NM to RW20

\*1.1 NM to RW20

RW20

880\*

1800

2600

204°

024°

6000

3000

GP 3.00° TCH 40

1.1 NM

1.4 NM

2.9 NM

3.1 NM

6.5 NM

CATEGORY	A	B	C	D
LNAV/VNAV DA		311-1	250 (300-1)	
LNAV MDA		420-1	359 (400-1)	
CIRCLING	520-1	459 (500-1)	520-1½ 459 (500-1½)	700-2 639 (700-2)