

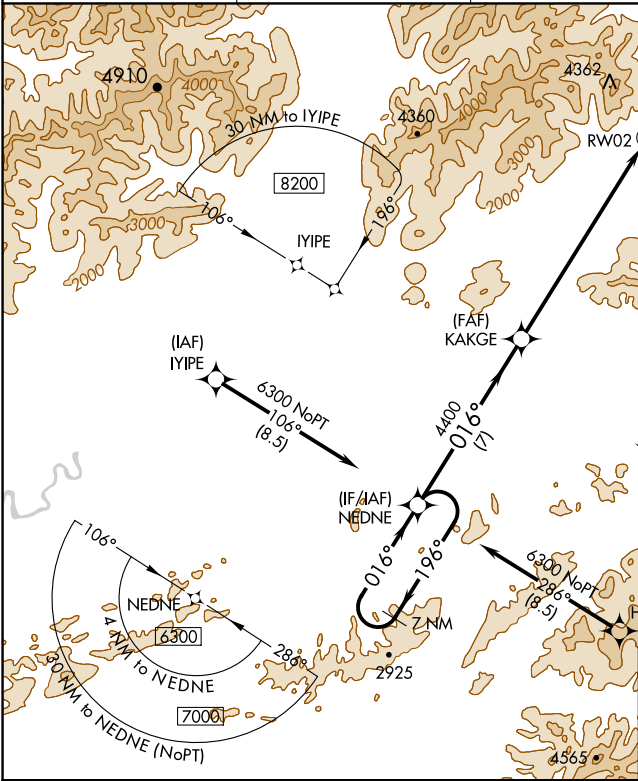
WAAS CH 93727 W02A	APP CRS 016°	Rwy Idg TDZE 1044 Apt Elev 1046	4011
--	------------------------	---	-------------

RNAV (GPS) RWY 2

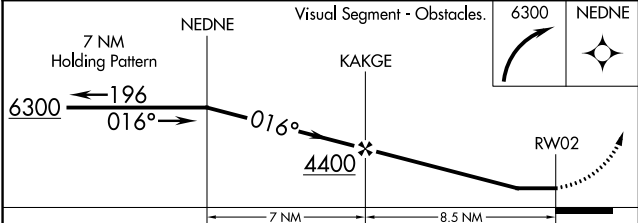
COLDFOOT (CXF) (PACX)

<div><div><div>NA</div><div>-19°C</div></div></div> <div>Circling NA for Cats B and C west of Rwy 2-20. DME/DME RNP-0.3 NA. Rwy 2 helicopter visibility reduction below ¾ SM NA. Use Bettles altimeter setting, when not received, procedure NA. Circling Rwy 20 NA at night.</div> <div>MISSED APPROACH: Climbing right turn to 6300 direct NEDNE and hold.</div>
--

BTT/PABT ASOS 135.45	ANCHORAGE CENTER 124.6 352.0	FAIRBANK RADIO 122.0	CTAF 122.90
--------------------------------	--	--------------------------------	-----------------------



ELEV 1046	TDZE 1044
-----------	-----------



CATEGORY	A	B	C	D
LP MDA	4160-1¼ 3116 (3200-1¼)	4160-1½ 3116 (3200-1½)	4160-3 3116 (3200-3)	NA
LNAV MDA	4340-1¼ 3296 (3300-1¼)	4340-1½ 3296 (3300-1½)	4340-3 3296 (3300-3)	NA
CIRCLING	4340-1¼ 3294 (3300-1¼)	4340-1½ 3294 (3300-1½)	4340-3 3294 (3300-3)	NA

