

WAAS CH 53315 W21A	APP CRS 209°	Rwy Idg TDZE 175 Apt Elev 181
--	------------------------	---

RNAV (GPS) RWY 21

KALTAG (KAL)(PAKV)

⚠

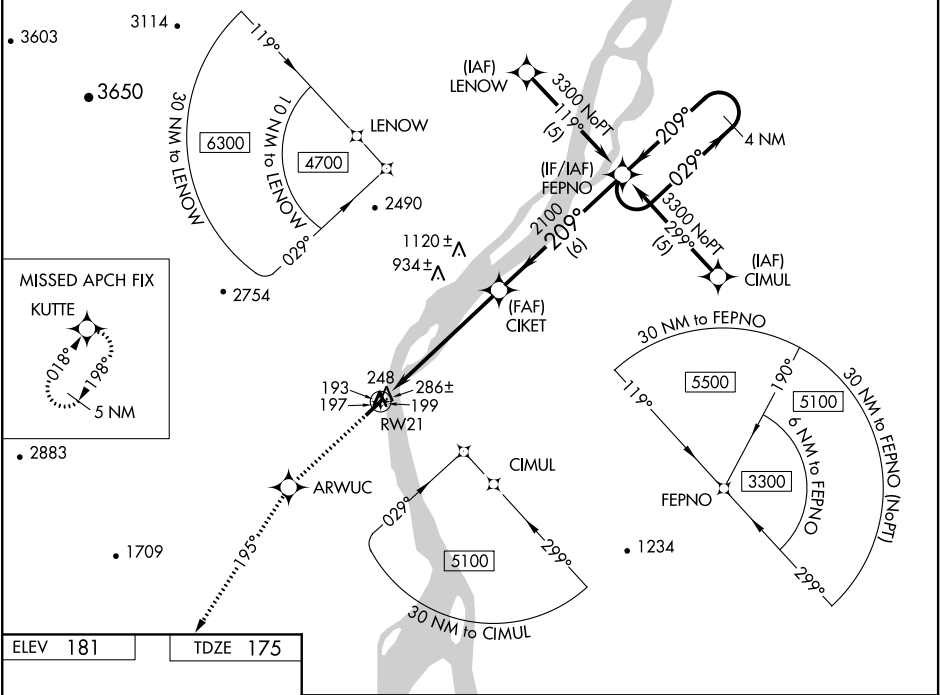
⚠

⚠

For uncompensated Baro-VNAV systems, LNAV/VNAV NA below -25°C (-13°F) or above 54°C (130°F).
DME/DME RNP- 0.3 NA. Night Landing: Rwy 3 NA.
Helicopter visibility reduction below ¾ SM NA.

MISSED APPROACH: Climb to 4600 direct ARWUC and via track 195° to KUTTE and hold, continue climb-in-hold to 4600.

ASOS 135.25	ANCHORAGE CENTER 127.0 290.2	CTAF 122.9
-----------------------	--	----------------------



ELEV 181

TDZE 175

4600

ARWUC

↑

tr

195°

KUTTE

209° to RW21

0.2% Up

3986 x 100

4 NM Holding Pattern

FEPNO

3300

GP 3.00°

TCH 52

CATEGORY	A	B	C	D
LPV	DA	493-1	318 (400-1)	NA
LNAV/VNAV	DA	598-1½	423 (500-1½)	NA
LNAV	MDA	960-1 785 (800-1)	960-1¼ 785 (800-1¼)	960-2¼ 785 (800-2¼)
CIRCLING	960-1 779 (800-1)	960-1¼ 779 (800-1¼)	960-2¼ 779 (800-2¼)	NA