

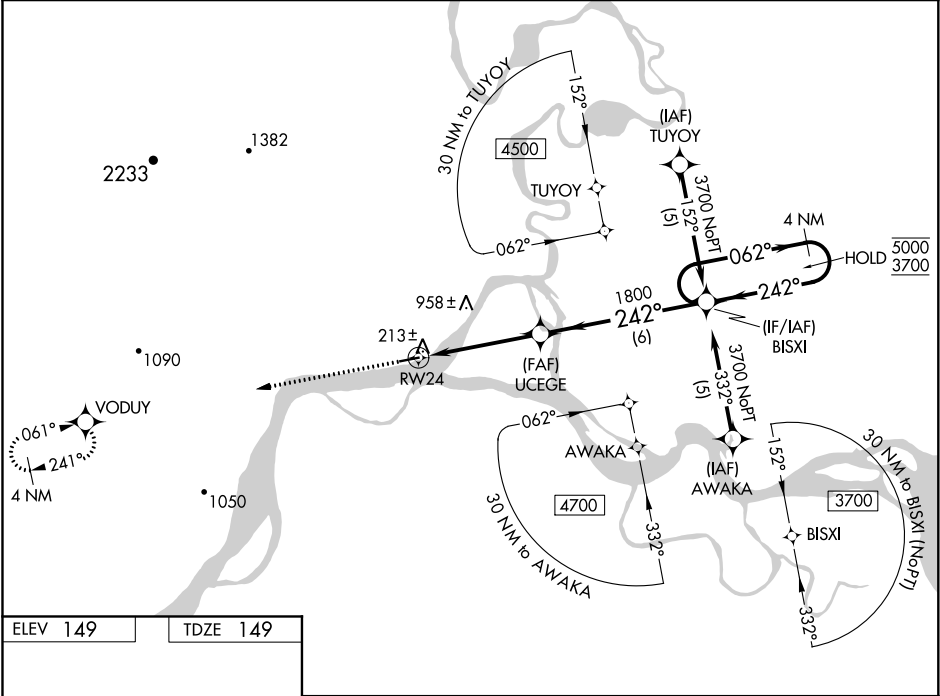
WAAS CH 99314 W24A	APP CRS 242°	Rwy Idg TDZE 149 Apt Elev 149
--	------------------------	---

RNAV (GPS) RWY 24

KOYUKUK (KYU) (PFKU)

RNP APCH.	MISSED APPROACH: Climb to 3900 direct VODUY and hold, continue climb-in-hold to 3900.
▼ ▲ NA ❄ -25°C	Rwy 24 helicopter visibility reduction below 1 SM NA. Baro-VNAV NA. Use Galena altimeter setting; when not received, procedure NA. Straight-in and Circling Rwy 24 NA at night.

GAL/PAGA AWOS-3 132.525	ANCHORAGE CENTER 127.0 290.2	CTAF 122.9 0
-----------------------------------	--	------------------------



ELEV 149

TDZE 149

3900

VODUY

RWY 24

4000 X 75

242° to RWY 24

UCEGE

BISXI

4 NM Holding Pattern

062° → 5000

← 242° 3700

GP 3.40°

TCH 55

CATEGORY	A	B	C	D
LPV DA	484-1 335 (400-1)			NA
LNAV/VNAV DA	537-1¼ 388 (400-1¼)			NA
LNAV MDA	1060-1¼ 911 (1000-1¼)		1060-2¾ 911 (1000-2¾)	NA
CIRCLING	1060-1¼ 911 (1000-1¼)		1060-2¾ 911 (1000-2¾)	NA