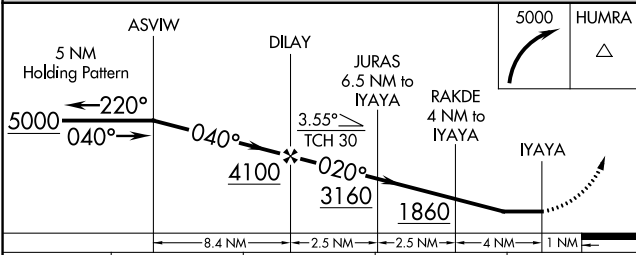
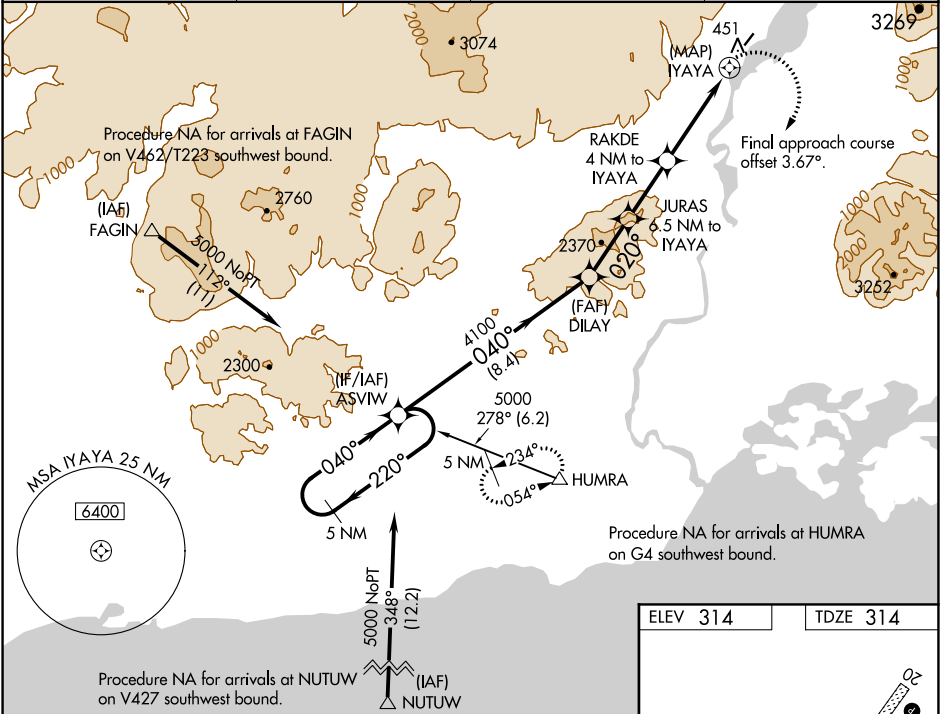


APP CRS	Rwy Idg	2800
020°	TDZE	314
	Apt Elev	314

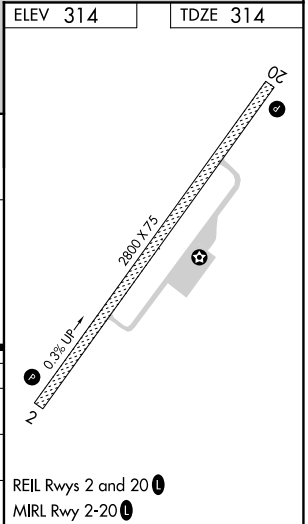
RNAV (GPS) RWY 2  
NONDALTON (5NN) (PANO)

RNP APCH.	When Iliamna altimeter setting not received, procedure NA. Circling NA west of Rwy 2-20. Rwy 2 helicopter visibility reduction below 1 SM NA. Straight-In Rwy 2 NA at night, Circling Rwy 2 NA at night.	MISSED APPROACH: Climbing right turn to 5000 direct HUMRA and hold, continue climb-in-hold to 5000. *Missed approach requires minimum climb of 265 feet per NM to 2500.
-----------	---	--

ILI/PAJL ASOS 134.95	ANCHORAGE CENTER 118.8	KENAI RADIO 122.2	CTAF 122.9
-------------------------	---------------------------	----------------------	---------------



CATEGORY	A	B	C	D
LNNAV MDA	1660-1¼ 1346 (1400-1¼)	1660-1½ 1346 (1400-1½)		NA
LNNAV MDA*	1380-1¼ 1066 (1100-1¼)	1380-1½ 1066 (1100-1½)		NA
CIRCLING	1660-1¼ 1346 (1400-1¼)	1660-1½ 1346 (1400-1½)		NA



AK, 05 NOV 2020 to 31 DEC 2020

AK, 05 NOV 2020 to 31 DEC 2020