

APP CRS	Rwy Idg	4011
229°	TDZE	406
	Apt Elev	406

RNAV (GPS) RWY 21

NULATO (NUL) (PANU)

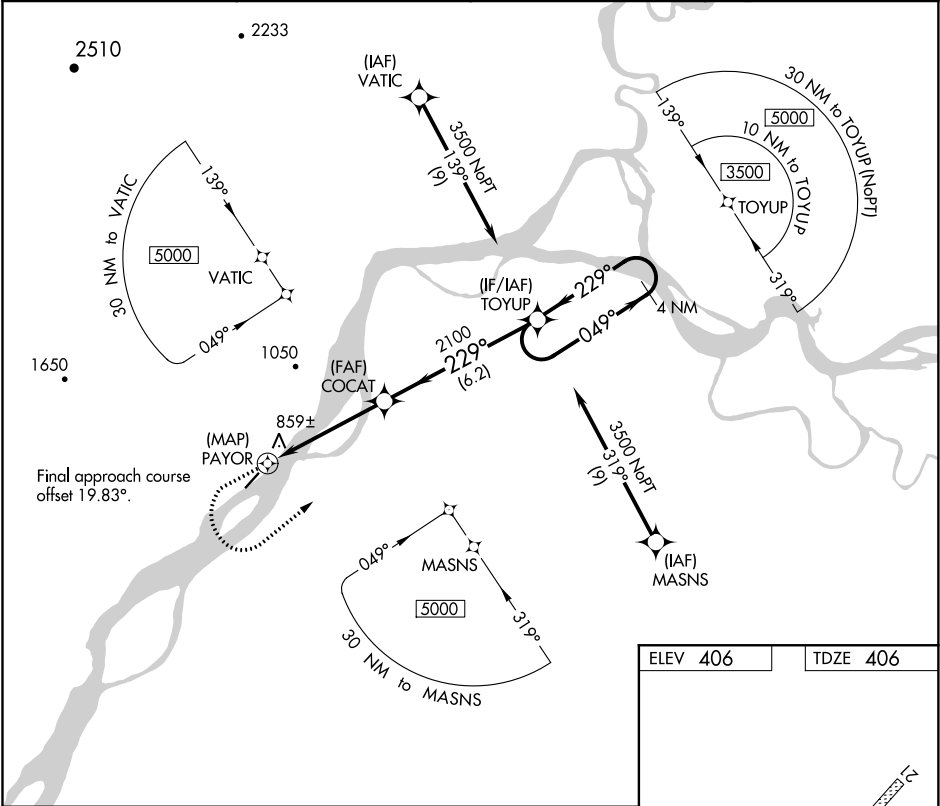
▼

NA

Rwy 21 helicopter visibility reduction below 1 SM NA.  
DME/DME RNP-0.3 NA. Use Galena altimeter setting.  
Procedure NA at night.

MISSED APPROACH: Climb to 1600 then climbing left turn to 3500 direct TOYUP and hold.

GAL/PAGA AWOS-3 132.525	ANCHORAGE CENTER 127.0 290.2	FAIRBANKS RADIO 122.2	CTAF 122.9
----------------------------	---------------------------------	--------------------------	---------------



1600

3500

TOYUP

Visual Segment - Obstacles.

PAYOR

COCAT

TOYUP

4 NM Holding Pattern

0.5

4.7 NM

6.2 NM

CATEGORY	A	B	C	D
LNNAV MDA	1220-1 814 (900-1)	1220-1¼ 814 (900-1¼)	1220-2½ 814 (900-2½)	
CIRCLING	1280-1¼ 874 (900-1¼)	1380-1½ 974 (1000-1½)	1420-3 1014 (1100-3)	1620-3 1214 (1300-3)

ELEV 406

TDZE 406

4011 X 100

1.1% UP

MIRL Rwy 3-21

AK, 05 NOV 2020 to 31 DEC 2020

AK, 05 NOV 2020 to 31 DEC 2020