

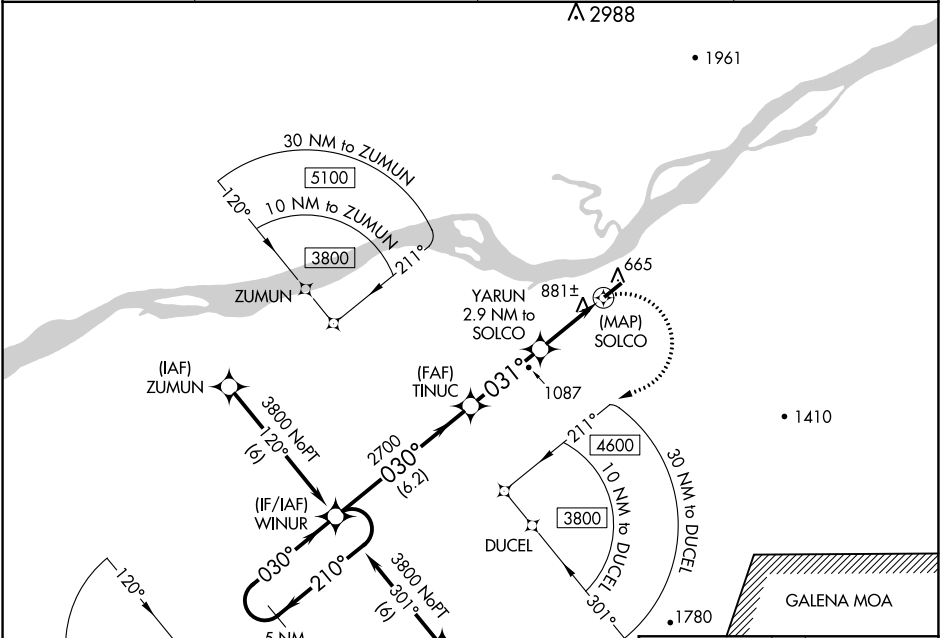


| | |
|------------------------|------------------------|
| APP CRS 031° | Rwy Idg 4000 |
| | TDZE 648 |
| | Apt Elev 658 |

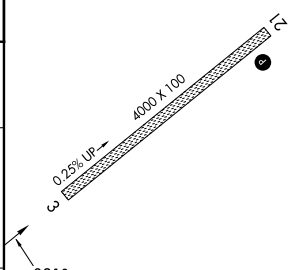
RNAV (GPS) RWY 3
RUBY (RBY) (PARY)

| | | |
|---|---|--|
|   -40°C | When local altimeter setting not received, use Galena altimeter setting and increase all MDA 340 feet, increase LNAV and Circling Cat A visibility ¼ mile, Cat B ½ mile and Cat C 1 ¼ mile. DME/DME RNP-0.3 NA. Rwy 3 Straight-in and Circling minimums NA at night. Helicopter visibility reduction below 1 SM NA. | MISSED APPROACH: Climbing right turn to 3800 direct WINUR and hold. |
|---|---|--|

| | | | |
|--------------------------|--|----------------------------------|----------------------|
| AWOS-3P 118.25 | ANCHORAGE CENTER 127.0 290.2 | FAIRBANKS RADIO 122.25 | CTAF 122.8 |
|--------------------------|--|----------------------------------|----------------------|



| | | | | | |
|----------------------|--------|-----------------------------|-------------------------|-----------------------|--------|
| 5 NM Holding Pattern | | Visual Segment - Obstacles. | | 3800 | WINUR |
| 3800 ← 210° | | TINUC | | YARUN 2.9 NM to SOLCO | SOLCO |
| → 030° | | 2700 | | 1800 | |
| | | 6.2 NM | | 3.2 NM | 2.9 NM |
| | | | | 0.1 | |
| CATEGORY | A | B | C | D | |
| LNAV MDA | 1260-1 | 612 (700-1) | 1260-1¾ 612 (700-1¾) | NA | |
| CIRCLING | 1260-1 | 602 (700-1) | 1260-1¾ 602 (700-1¾) | NA | |



0.25% UP
4000 X 100
031° to SOLCO

REIL Rwy 21
MIRL Rwy 3-21

AK, 05 NOV 2020 to 31 DEC 2020

AK, 05 NOV 2020 to 31 DEC 2020