

APP CRS
253°

Rwy Idg	3280
TDZE	57
Apt Elev	57

RNAV (GPS) RWY 25

PILOT POINT (PNP)(PAPN)

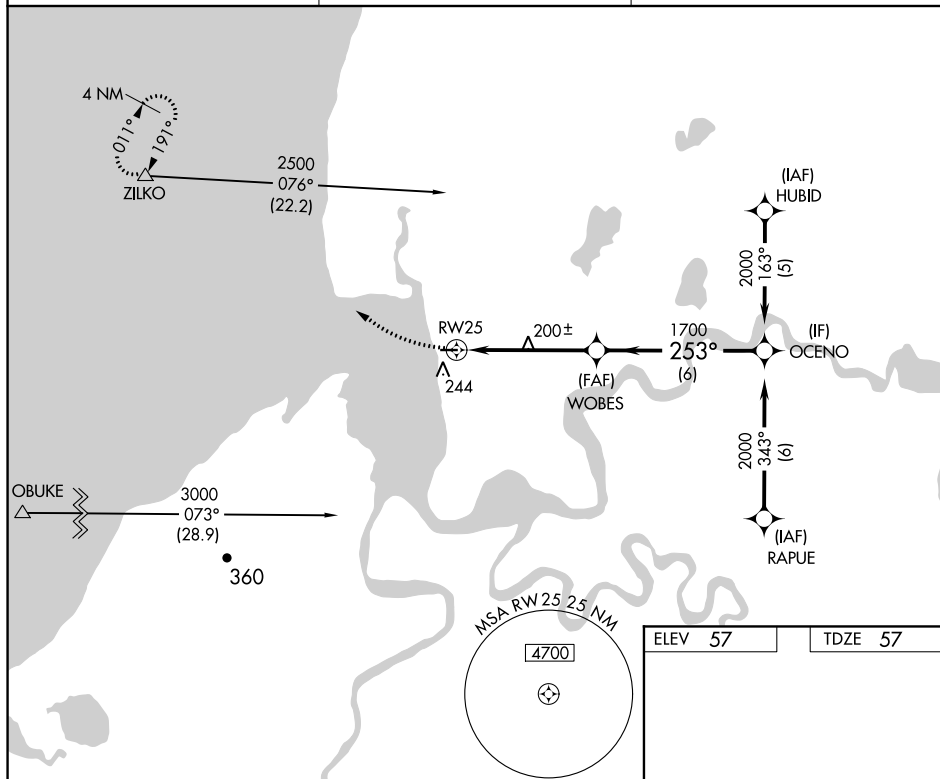


DME/DME RNP-0.3 NA. When local altimeter setting not received, use King Salmon altimeter setting and increase all MDA 180 feet.

MISSED APPROACH: Climbing right turn to 2500 direct ZILKO and hold.

AWOS-3P
118.375

ANCHORAGE CENTER
132.9 288.3

CTAF
122.9 **L**

2500

ZILKO

Visual Segment - Obstacles.

OCENO

WOBES

2000

RW25

5 NM

CATEGORY

A

B

C

LNAV MD.

5.

-1-

NA

CIRCLING

6

-1

NA

MIRL Rwy 7-25 **L**

PILOT POINT, ALASKA
Orig-C 12OCT17

57°35'N-157°34'W

PILOT POINT (PNP)(PAPN)
RNAV (GPS) RWY 25