

APP CRS	Rwy Idg	3280
073°	TDZE	57
	Apt Elev	57

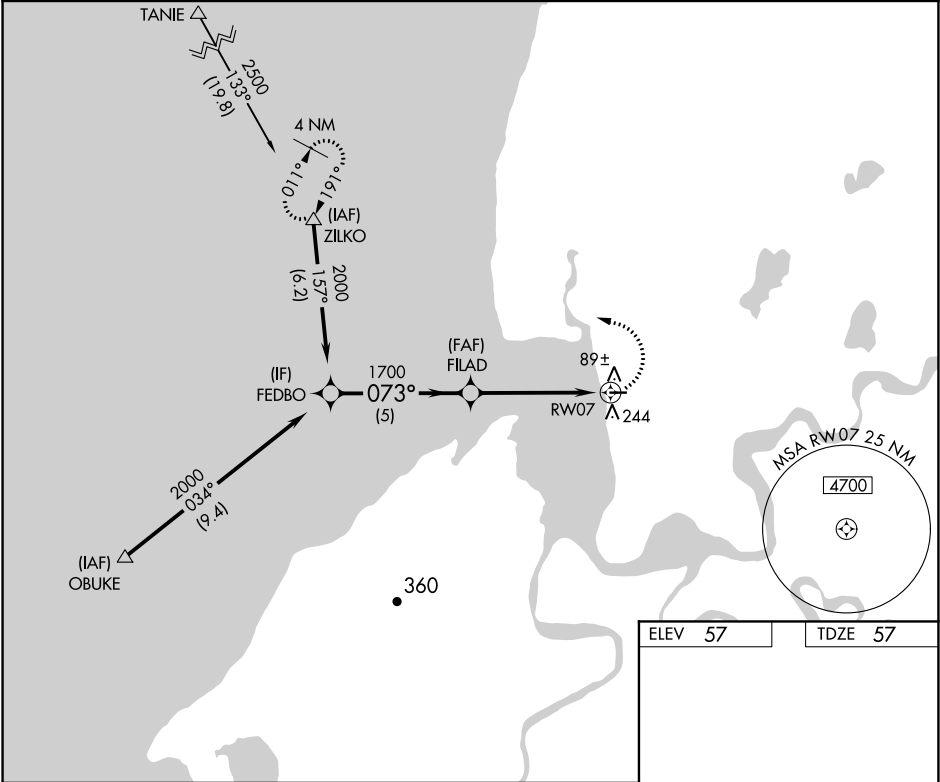
RNAV (GPS) RWY 7

PILOT POINT (PNP)(PAPN)

DME/DME RNP-0.3 NA. When local altimeter setting not received, use King Salmon altimeter setting and increase all MDA 180 feet.

MISSED APPROACH: Climbing left turn to 2500 direct ZILKO and hold.

AWOS-3P 118.375	ANCHORAGE CENTER 132.9 288.3	CTAF 122.9 0
--------------------	---------------------------------	-----------------



Visual Segment - Obstacles.

2500

ZILKO

FEDBO

FILAD

RW07

2000

1700

073°

5 NM

5 NM

CATEGORY	A	B	C	D
LNAV MDA	520-1	463 (500-1)	NA	
CIRCLING	600-1	543 (600-1)	NA	

MIRL Rwy 7-25 0

ELEV 57

TDZE 57

073° to RW07

0.6% UP

3280 X 75

25