

APP CRS
137°

Rwy Idg
TDZE
Apt Elev

3281
364
364

RNAV (GPS) RWY 14

NEW STUYAHOK (KNW) (PANW)

▼

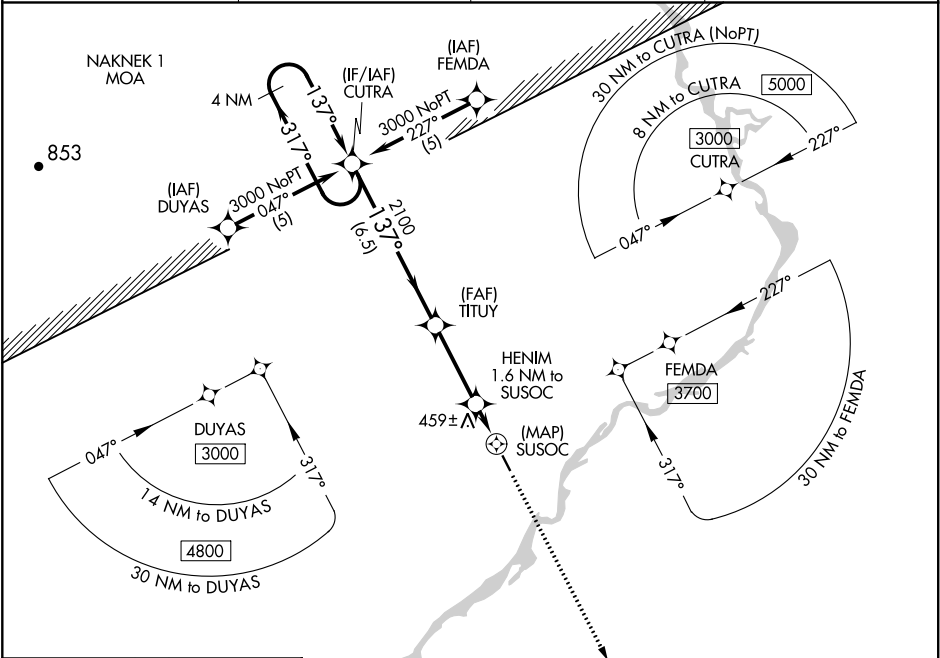
When local altimeter setting not received, use Koliganek altimeter setting and increase all MDAs 60 feet. Procedure NA at night.

⚠

DME/DME RNP-0.3 NA. Visibility reduction by helicopters NA.

MISSED APPROACH: Climb to 3000 direct JIKAL and hold.

AWOS-3P 120.275	ANCHORAGE CENTER 132.75 282.35	DILLINGHAM RADIO 122.55	CTAF 122.9
--------------------	-----------------------------------	----------------------------	---------------



ELEV 364

TDZE 364

The inset chart shows the approach to RWY 14 with a heading of 137° and a runway width of 320 x 75. It includes a 137° heading and a 320 x 75 runway width.

MIRL Rwy 14-32

REIL Rwy 14 and 32

4 NM Holding Pattern				CUTRA		TITUY		HENIM 1.6 NM to SUSOC		3000		JIKAL	
3000				317° 137°		137°		3.05° TCH 35		2100		SUSOC	
				6.5 NM		3.2 NM		1.6 NM		0.5			
CATEGORY		A		B		C		D					
LNAV MDA		780-1		416 (500-1)				NA					
CIRCLING		780-1 416 (500-1)		840-1 476 (500-1)				NA					