

WAAS CH 93524 W34A	APP CRS 345°	Rwy Idg TDZE Apt Elev	3218 72 72
--	------------------------	-----------------------------	---------------------------------------

RNAV (GPS) RWY 34

TOKSOOK BAY (OOK)(PA00)

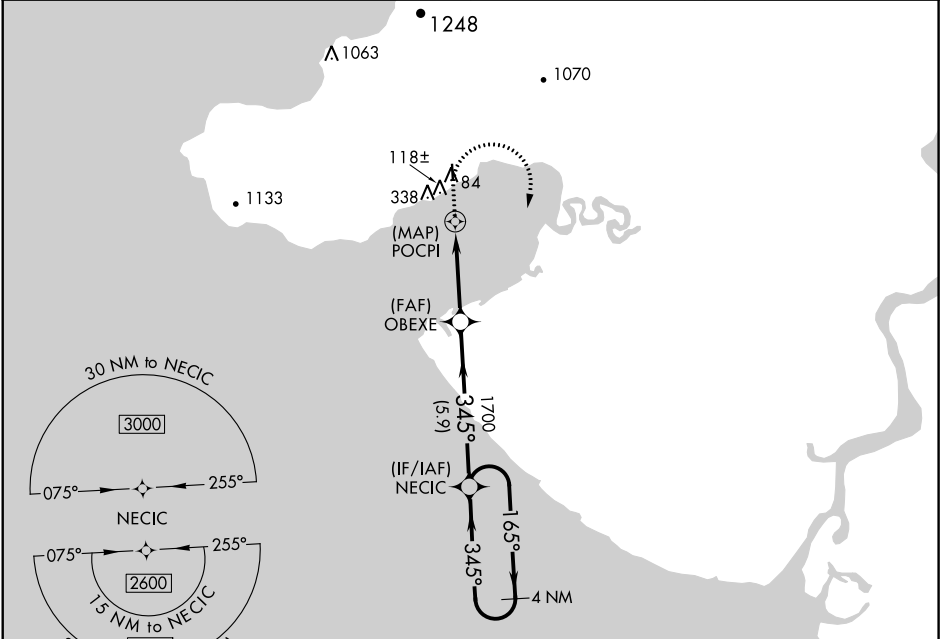
⚠

⚠

Circling NA west of Rwy 16-34. DME/DME RNP-0.3 NA.
When local altimeter setting not received, use Mekoryuk
altimeter setting and increase all MDA 100 feet.

MISSED APPROACH: Climb to 600 then
climbing right turn to 2600 direct NECIC
and hold.

AWOS-3P 119.275	ANCHORAGE CENTER 125.2 372.0	KENAI RADIO 122.6	CTAF 122.9
---------------------------	--	-----------------------------	----------------------



600

2600

NECIC

VGSI and descent angles not coincident.
(VGSI Angle 3.00/TCH 40).

POCPI

OBEXE

NECIC

4 NM Holding Pattern

1700

2600

1.5 NM

3.6 NM

5.9 NM

CATEGORY	A	B	C	D
LP MDA	340-1 $\frac{3}{4}$	268 (300-1 $\frac{3}{4}$)		NA
LNAV MDA	420-1 $\frac{3}{4}$	348 (400-1 $\frac{3}{4}$)		NA
CIRCLING	460-1 $\frac{3}{4}$ 388 (400-1 $\frac{3}{4}$)	540-1 $\frac{3}{4}$ 468 (500-1 $\frac{3}{4}$)		NA

ELEV 72

TDZE 72

91

3218 X 60

0.7% UP

34

REIL Rwy 16 and 34

MIRL Rwy 16-34