

20254

Rwy Idg	3990
TDZE	26
Apt Elev	26

RNAV (GPS) RWY 18

WALES (IWK) (PAIW)

 -27°C

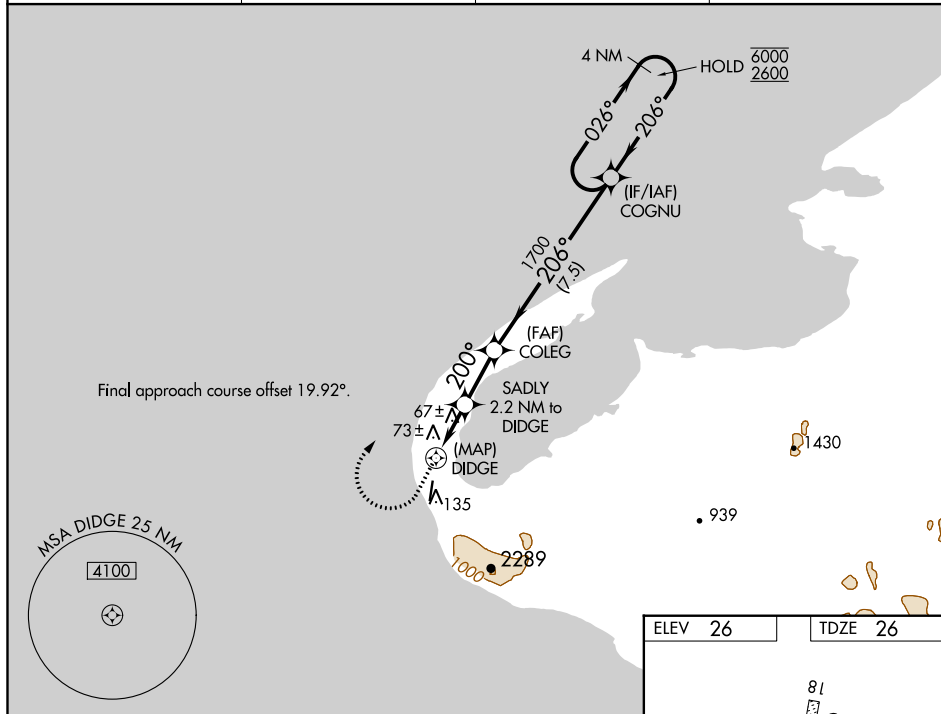
Circling NA east of Rwy 18-36.

MISSED APPROACH: Climb to 500 then climbing right turn to 2600 direct COGNUM and hold.

AWOS-3P
118.525

ANCHORAGE CENTER
133.3 290.4

NOME RADIO
122.6

CTAF
123.0 L

500 2600 COGNU VGS angle and descent angles not coincident (VGS Angle 3.00/TCH 26).

COGNU 4 NM Holding Pattern

COLEG

SADLY 2.2 NM to DIDGE $\leq 3.00^\circ$ TCH 30

DIDGE

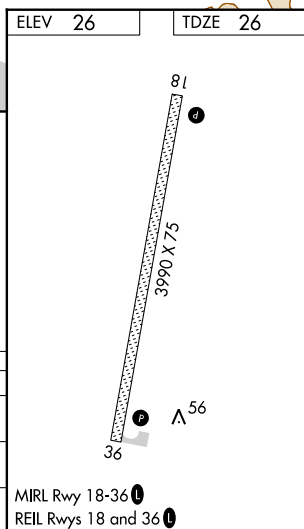
200° 1000

026° 1700

206°

0.8 2.2 NM 2.2 NM 7.5 NM

CATEGORY	A	B	C	D
LP MDA	340-1 314 (400-1)			
LNAV MDA	640-1 614 (700-1)		640-1 ³ / ₄ 614 (700-1 ³ / ₄)	
C CIRCLING	640-1 614 (700-1)		640-1 ³ / ₄ 614 (700-1 ³ / ₄)	640-2 614 (700-2)



WALES, ALASKA
Amdt 1 08NOV18

65°37'N-168°06'W

WALES (IWK) (PAIW)

RNAV (GPS) RWY 18

AK, 05 NOV 2020 to 31 DEC 2020

AK. 05 NOV 2020 to 31 DEC 2020