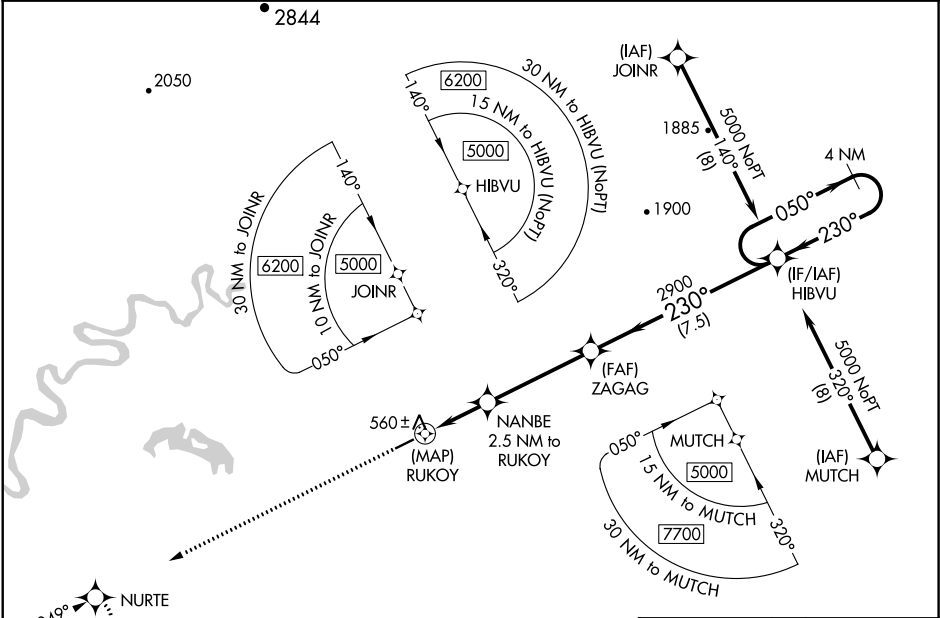


APP CRS	Rwy Idg	4001
230°	TDZE	448
	Apt Elev	448

RNAV (GPS) RWY 23
NIKOLAI (FSP)(PAFS)

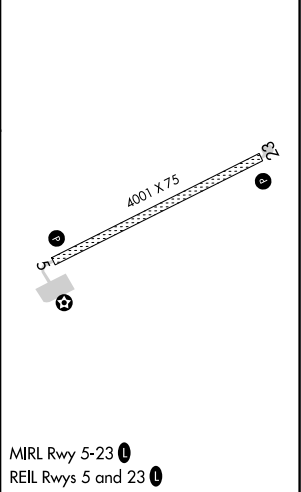
RNP APCH.	MISSED APPROACH: Climb to 3000 direct NURTE and hold.
Rwy 23 helicopter visibility reduction below 3/4 SM NA.	

AWOS-3P 118.325	ANCHORAGE CENTER 128.1 353.8	CTAF 122.8
--------------------	---------------------------------	---------------



ELEV 448	TDZE 448
----------	----------

3000	NURTE	VGSI and descent angles not coincident (VGSI Angle 3.20/TCH 28).			
CATEGORY	A	B	C	D	
LNAV MDA	820-1 372 (400-1)				
CIRCLING	860-1 412 (500-1)	900-1 452 (500-1)	900-1½ 452 (500-1½)	1000-2 552 (600-2)	



AK, 05 NOV 2020 to 31 DEC 2020

AK, 05 NOV 2020 to 31 DEC 2020