

WAAS CH <b>45610</b> <b>W16A</b>	APP CRS <b>165°</b>	Rwy Idg <b>3400</b> TDZE <b>79</b> Apt Elev <b>79</b>
--	------------------------	---

RNAV (GPS) RWY 16

SHAGELUK (SHX) (PAHX)

RNP APCH.

▼

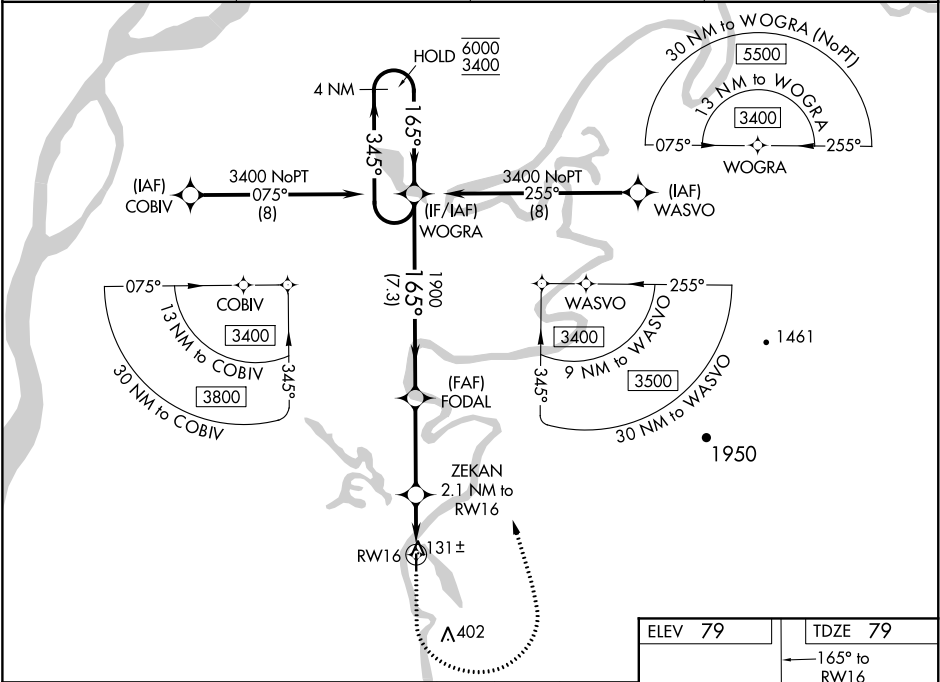
⚠

✂

For uncompensated Baro-VNAV systems, LNAV/VNAV NA below -25°C or above 54°C.  
Circling NA for Cats C and D east of Rwy 16-34.

MISSED APPROACH: Climb to 1000 then climbing left turn to 3400 direct WOGRA and hold.

AWOS-3P <b>121.575</b>	ANCHORAGE CENTER <b>135.7 335.5</b>	KENAI RADIO <b>122.4</b>	UNICOM <b>122.8 (CTAF)</b>
---------------------------	--	-----------------------------	-------------------------------



4 NM Holding Pattern				
WOGRA				
6000 ← 345° 3400 → 165°				
GP 3.00° TCH 40				
7.3 NM				
FODAL				
1900				
*800				
3.5 NM				
ZEKAN 2.1 NM to RWY 16				
*1.4 NM to RWY 16				
0.7				
1.4 NM				
CATEGORY	A	B	C	D
LPV DA		329-1	250 (300-1)	
LNAV/VNAV DA		329-1	250 (300-1)	
LNAV MDA		400-1	321 (400-1)	
CIRCLING	460-1 381 (400-1)	540-1 461 (500-1)	540-1½ 461 (500-1½)	800-2¼ 721 (800-2¼)

ELEV 79

TDZE 79

165° to RWY 16

9 L

3400 X 75

34

Water Rwy: 18W-36W 5000 X 1000

MIRL Rwy 16-34

REIL Rwy 34