

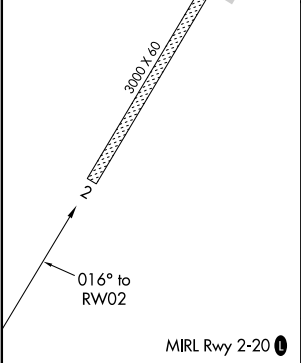
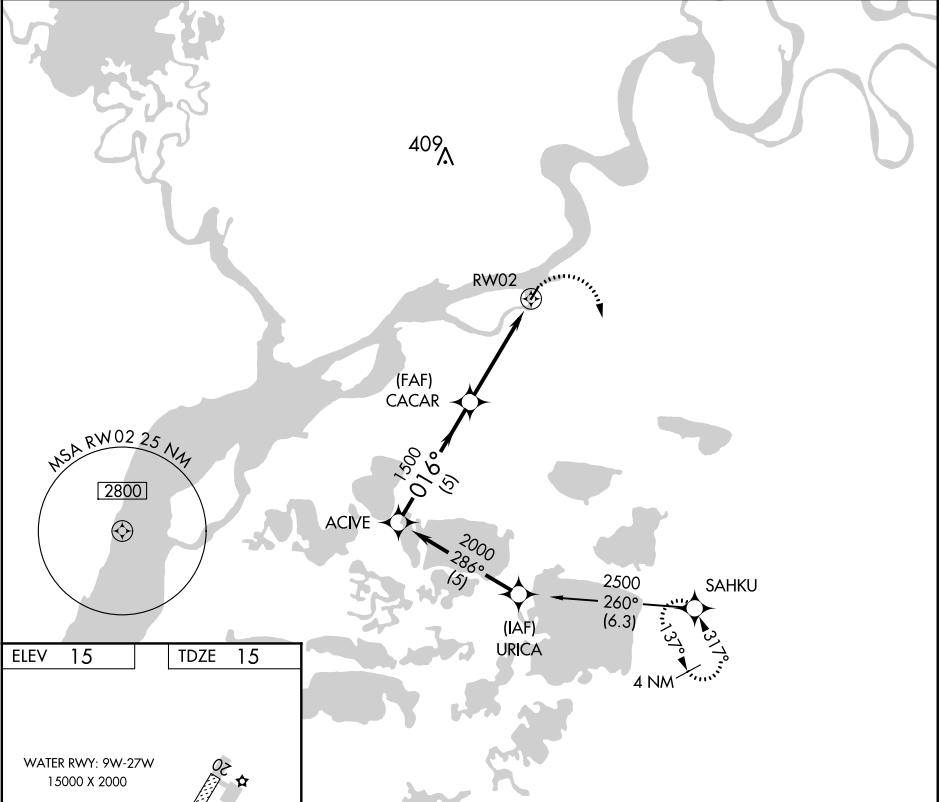
APP CRS 016°	Rwy Idg	3000
	TDZE	15
	Apt Elev	15

RNAV (GPS) RWY 2

NAPASKIAK (PKA) (PAPK)

<div><div><div></div><div></div></div><div>NA</div></div>	Use Bethel altimeter setting. GPS or RNP-0.3 required. DME/DME RNP-0.3 NA.	MISSED APPROACH: Climbing right turn to 2500 direct SAHKU WP and hold.

BET/PABE ASOS 135.45	ANCHORAGE CENTER 125.2 372.0	CTAF 122.9 
--------------------------------	--	--



Procedure Turn NA		2500		SAHKU	
ACTIVE		CACAR		RW02	
2000		1500		1.1	
016°		3.17°		1.1 NM to RW02	
5 NM		3.2 NM		1.1	
CATEGORY	A	B	C	D	
LNAV MDA	420-1	405 (500-1)	NA		
CIRCLING	420-1 405 (500-1)	480-1 465 (500-1)	NA		