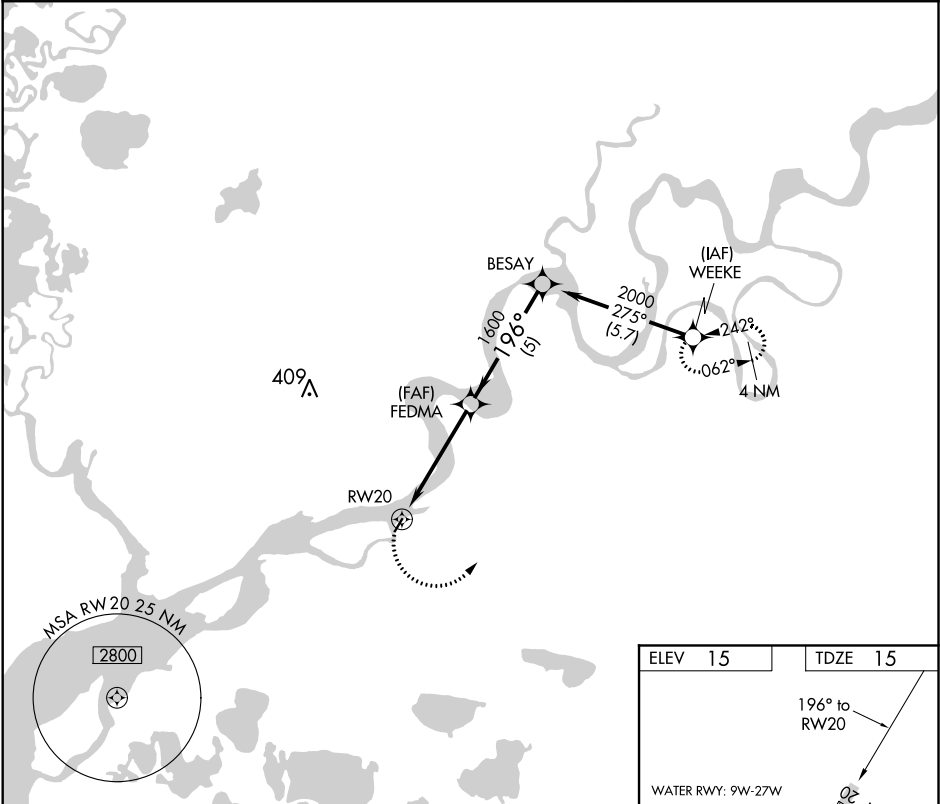


APP CRS	Rwy Idg	3000
196°	TDZE	15
	Apt Elev	15

RNAV (GPS) RWY 20
NAPASKIAK (PKA) (PAPK)

<p>▼ Use Bethel altimeter setting. ▲ NA GPS or RNP-0.3 required. DME/DME RNP-0.3 NA.</p>	<p>MISSED APPROACH: Climbing left turn to 2000 direct WEEKE WP and hold.</p>
--	--

BET/PABE ASOS 135.45	ANCHORAGE CENTER 125.2 372.0	CTAF 122.9 0
-------------------------	---------------------------------	------------------------



2000	WEEKE	Procedure Turn NA			

