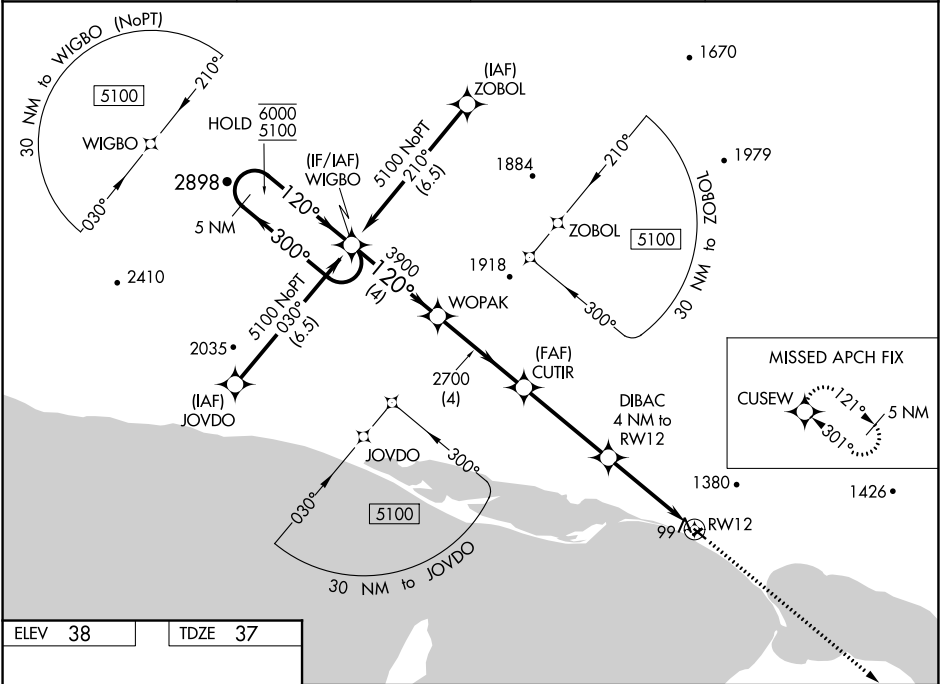


WAAS CH 77628 W12A	APP CRS 120°	Rwy Idg TDZE Apt Elev	2990 37 38
--	------------------------	-----------------------------	---------------------------------------

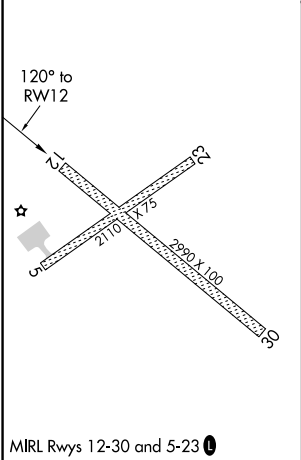
RNAV (GPS) RWY 12
BREVIG MISSION (KTS)(PFTK)

RNP APCH. MISSED APPROACH: Climb to 6300 direct CUSEW and hold, continue climb-in-hold to 6300.	<p>⚠ Circling NA north of Rws 12 and 23. Circling Rwy 23 NA at night. ⚠ -26°C For uncompensated Baro-VNAV systems, LNAV/VNAV NA below -25°C or above 54°C.</p>
--	--

AWOS-3P 121.55	ANCHORAGE CENTER 133.3 290.4	NOME RADIO 135.6	CTAF 123.00
--------------------------	--	----------------------------	-----------------------



ELEV 38	TDZE 37
---------	---------



5 NM Holding Pattern		WOPAK	CUTIR	DIBAC 4 NM to RW12	6300 CUSEW
6000 ← 300°		120°	2700	*1360	*LNAV only.
5100 120° →		3900		*0.9 NM to RW12	
GP 3.00°					
TCH 40					
		4 NM	4 NM	3.9 NM	3.1 NM
CATEGORY	A	B	C	D	
LPV DA	287-1	250 (300-1)		NA	
LNAV/VNAV DA	287-1	250 (300-1)		NA	
LNAV MDA	360-1	323 (400-1)		NA	
CIRCLING	620-1	1460-1½		NA	
	582 (600-1)	1422 (1500-1½)			

AK, 05 NOV 2020 to 31 DEC 2020

AK, 05 NOV 2020 to 31 DEC 2020