

APP CRS
003°

Rwy Idg
TDZE
Apt Elev
3200
80
80

RNAV (GPS) RWY 36
CLARKS POINT (CLP) (PFC/L)

▼

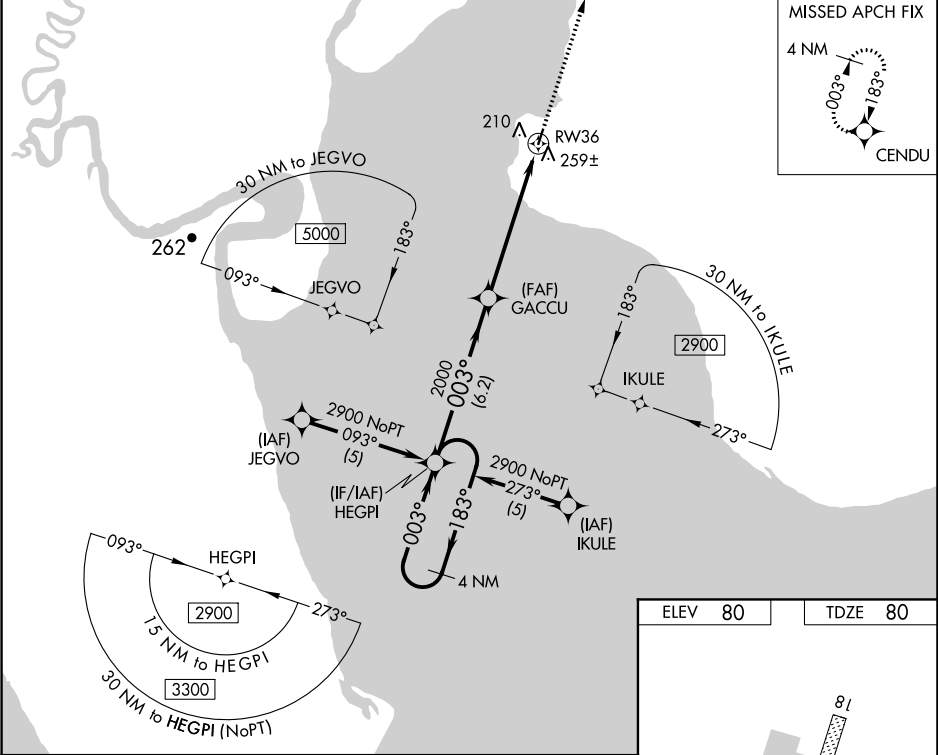
▲ NA

❄ -34°C

DME/DME RNP-0.3 NA. Procedure NA at night.
When local altimeter setting not received, use Dillingham altimeter setting.
Rwy 36 helicopter visibility reduction below 1 SM NA.

MISSED APPROACH: Climb to 2900 direct CENDU and hold.

AWOS-3P 135.55	DLG/PADL AWOS-3P 125.0	ANCHORAGE CENTER 132.75 282.35	CTAF 122.9 0
--------------------------	----------------------------------	--	------------------------



4 NM Holding Pattern

HEGPI

2900 ← 183°

003° →

GACCU

2900

CENDU

3.05° TCH 40

RW36

2000

003°

6.2 NM

5.8 NM

CATEGORY	A	B	C	D
LNNAV MDA	540-1	460 (500-1)	540-1 ¼ 460 (500-1 ¼)	540-1 ½ 460 (500-1 ½)
CIRCLING	600-1	520 (600-1)	600-1 ½ 520 (600-1 ½)	640-2 560 (600-2)

AK, 05 NOV 2020 to 31 DEC 2020

AK, 05 NOV 2020 to 31 DEC 2020