

WAAS CH 48814 W09A	APP CRS 091°	Rwy Idg 3401 TDZE 244 Apt Elev 244
--	------------------------	---

RNAV (GPS) RWY 9

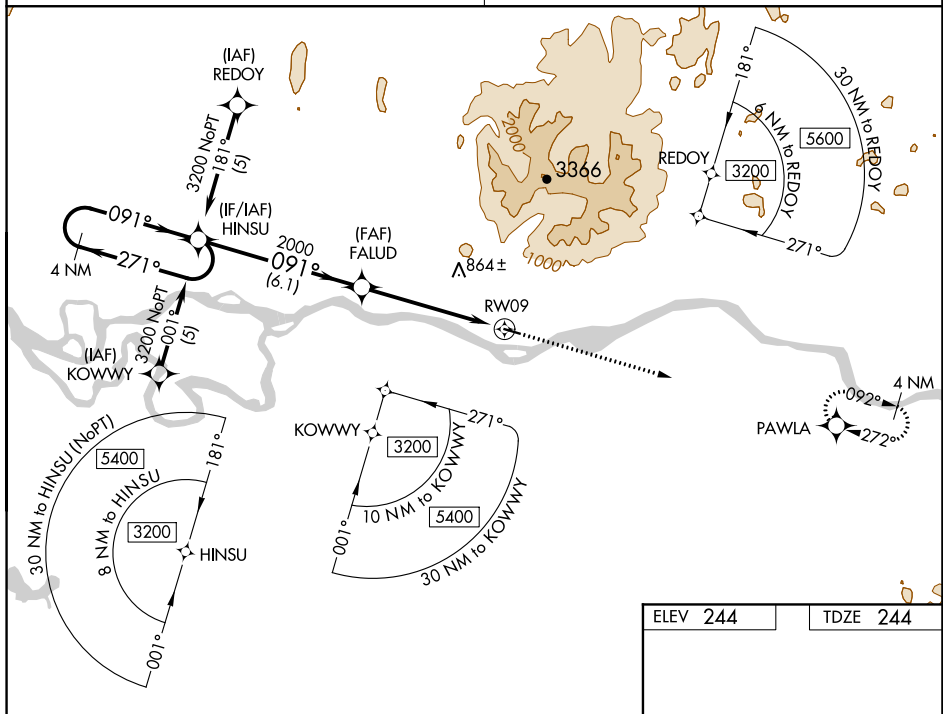
 T
 A NA
 -32°C

Circling NA north of Rwy 9-27. DME/DME RNP- 0.3 NA. Visibility reduction by helicopters NA. Use Aniak altimeter setting; when not received, use Kalskag altimeter setting and increase all DA 58 feet and MDA 60 feet and increase LPV all Cats visibility $\frac{1}{4}$ mile, and increase LNAV and circling Cat C visibility $\frac{1}{4}$ mile.

MISSED APPROACH: Climb to 3400
direct PAWLA and hold.

ANCHORAGE CENTER
118.15 251.05

CTAF
122.9 L



AK, 05 NOV 2020 to 31 DEC 2020

AK, 05 NOV 2020 to 31 DEC 2020

Diagram illustrating a runway layout. The runway is labeled 3401 X 60. The heading is 091° to RW09. The slope is 1.1% UP. The runway is marked with a 27° heading. The diagram includes a north arrow, a scale bar, and a legend for symbols: a circle with a cross for a runway, a circle with a dot for a taxiway, and a circle with a star for a threshold.

4 NM Holding Pattern

3200 ← 271° 091° →

GP 3.00° TCH 40

HINSU

FALUD

2000

6.1 NM

5.3 NM

RW09

VGSI and RNAV glidepath not coincident (VGSI Angle 3.00/TCH 26).

3400 PAWLA

CATEGORY	A	B	C	D
LPV DA	652-1½ 408 (500-1½)			NA
LNAV MDA	1000-1 756 (800-1)	1000-1¼ 756 (800-1¼)	1000-2¼ 756 (800-2¼)	NA
CIRCLING	1000-1 756 (800-1)	1000-1¼ 756 (800-1¼)	1000-2¼ 756 (800-2¼)	NA

CHUATHBALUK, ALASKA
Orig 22OCT09

61°35'N-159°13'W

CHUATHBALUK (9A3) (PACH)
RNAV (GPS) RWY 9